

VALLEY

BUSINESS CENTER

SUITE #108 FOR SUBLEASE



STRATTON

INTERNATIONAL

COMMERCIAL REAL ESTATE SERVICES

26639 VALLEY CENTER DR, SANTA CLARITA, CA 91351



GOLDEN VALLEY RD

VALLEY CENTER DR

SOLEDAD CANYON RD





PEDIATRIC THERAPY OF SANTA CLARITA

26630



VALLEY

BUSINESS CENTER

SUITE #108 FOR SUBLEASE

2,975 SF
SUITE SQ.FT.

CC
ZONING

9/1,000 SF
PARKING

NNN
LEASE TERMS

Stratton International Inc. is pleased to present Suite 108 at the Valley Business Center for sublease. This beautiful multi-tenant office building is located on Valley Center Dr., a tertiary street connecting Golden Valley Rd. & Soledad Canyon Rd. Tenants will appreciate the major street visibility, high traffic counts and 9 parking spaces per 1,000 sq.ft. The interior build-out is comprised of partitioned & private offices with two private restrooms, kitchen room and supply closet.

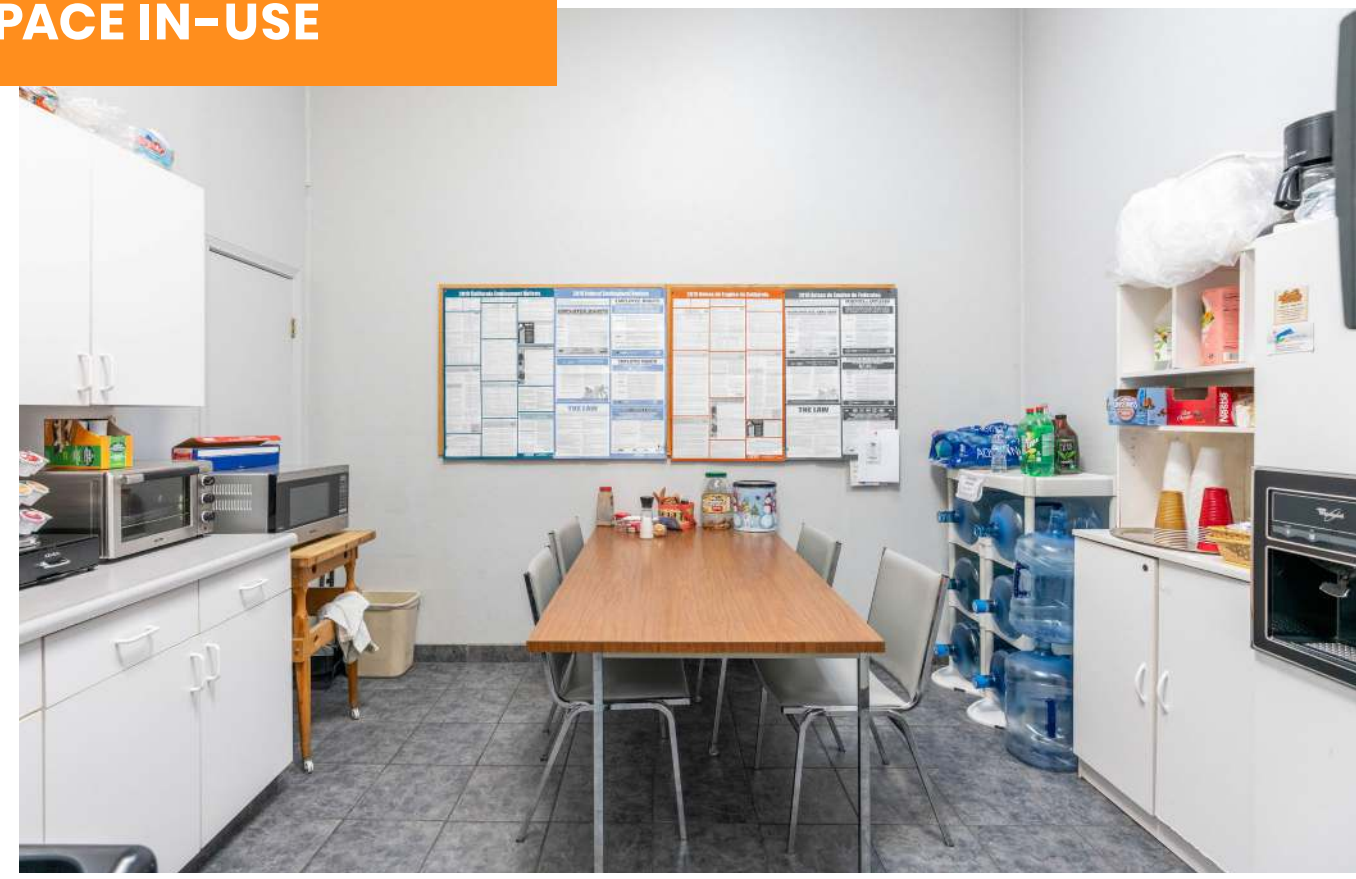
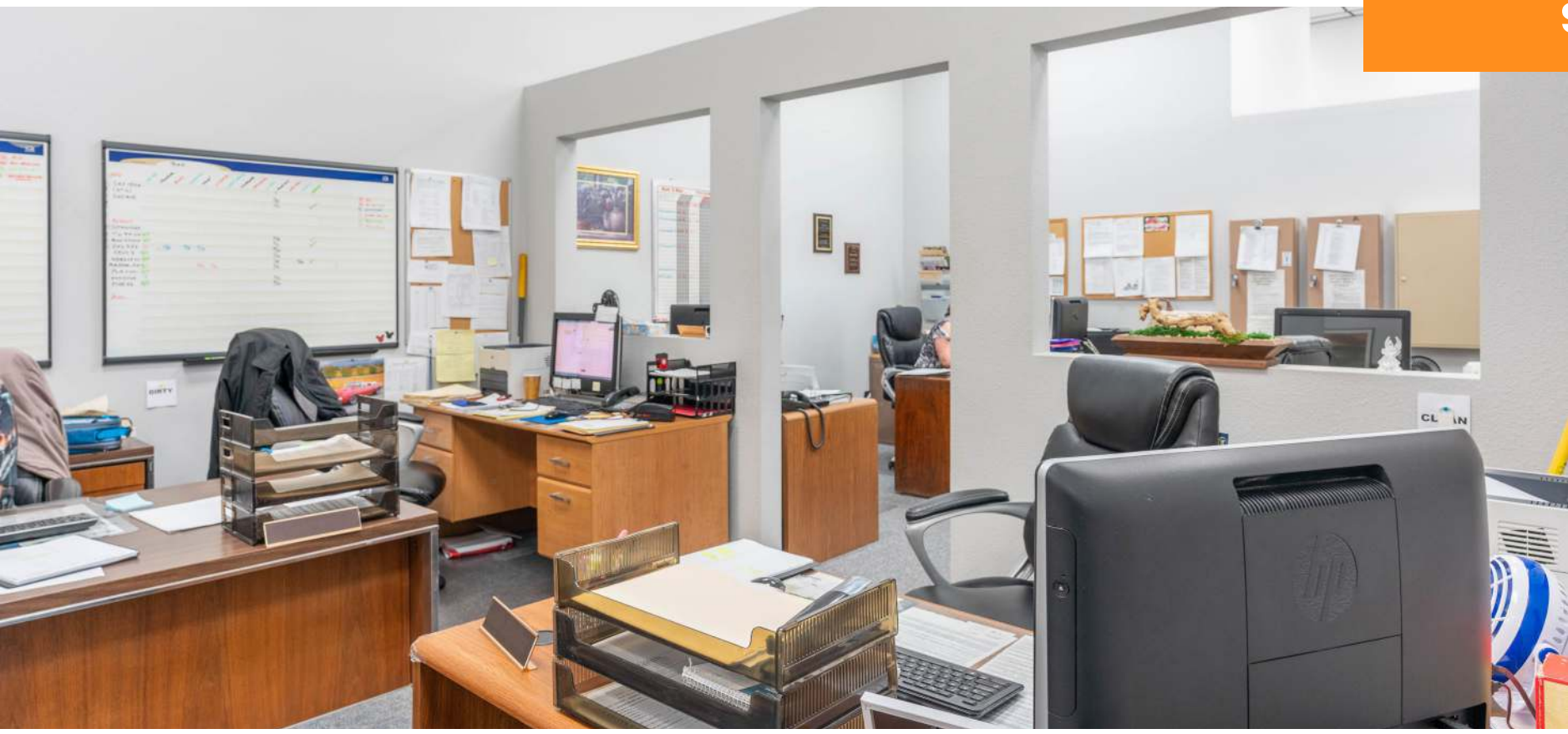
FOR MORE DETAILS

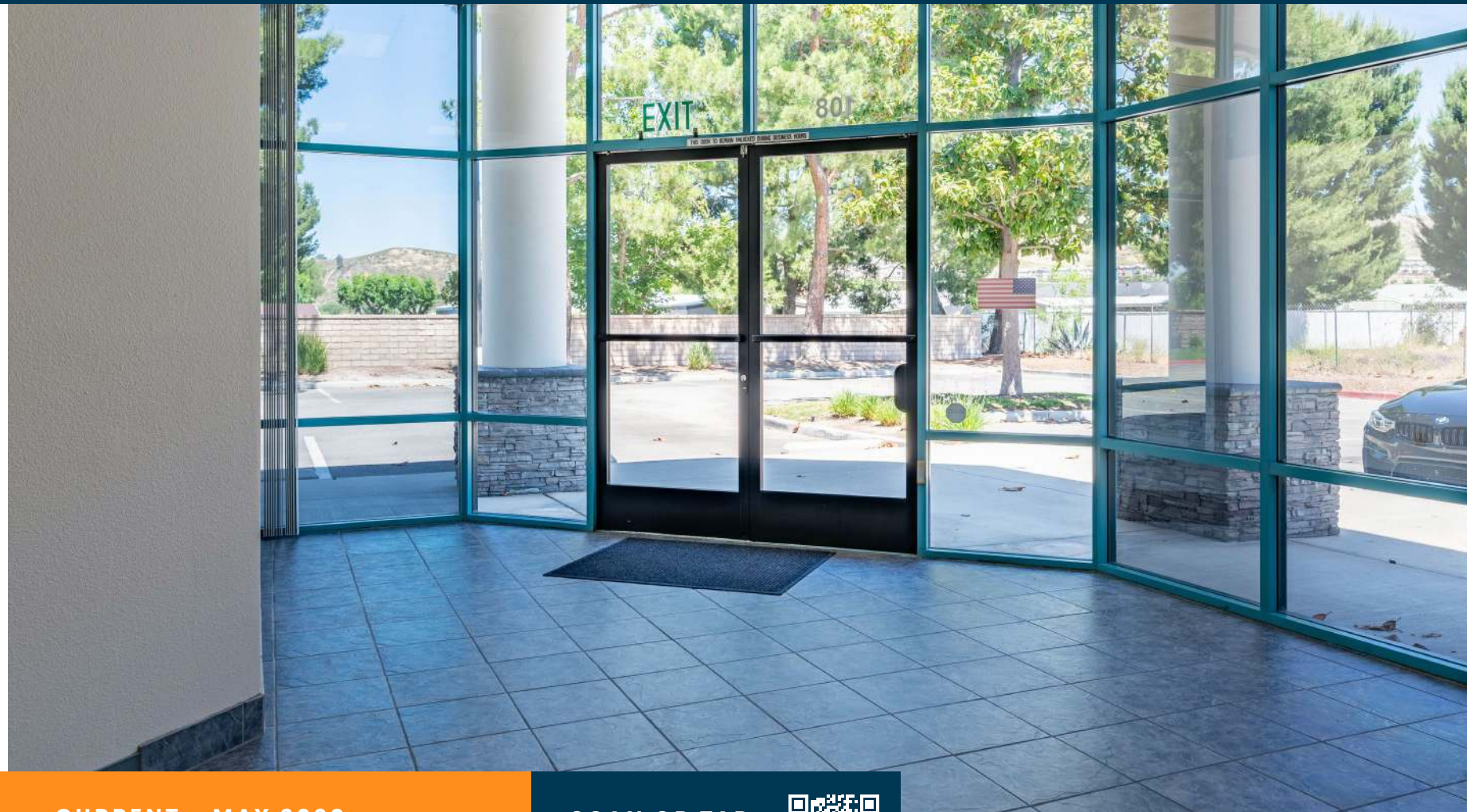
ROBERT A. STRATTON JR
661-212-5699





PREVIOUS TENANT
SPACE IN-USE



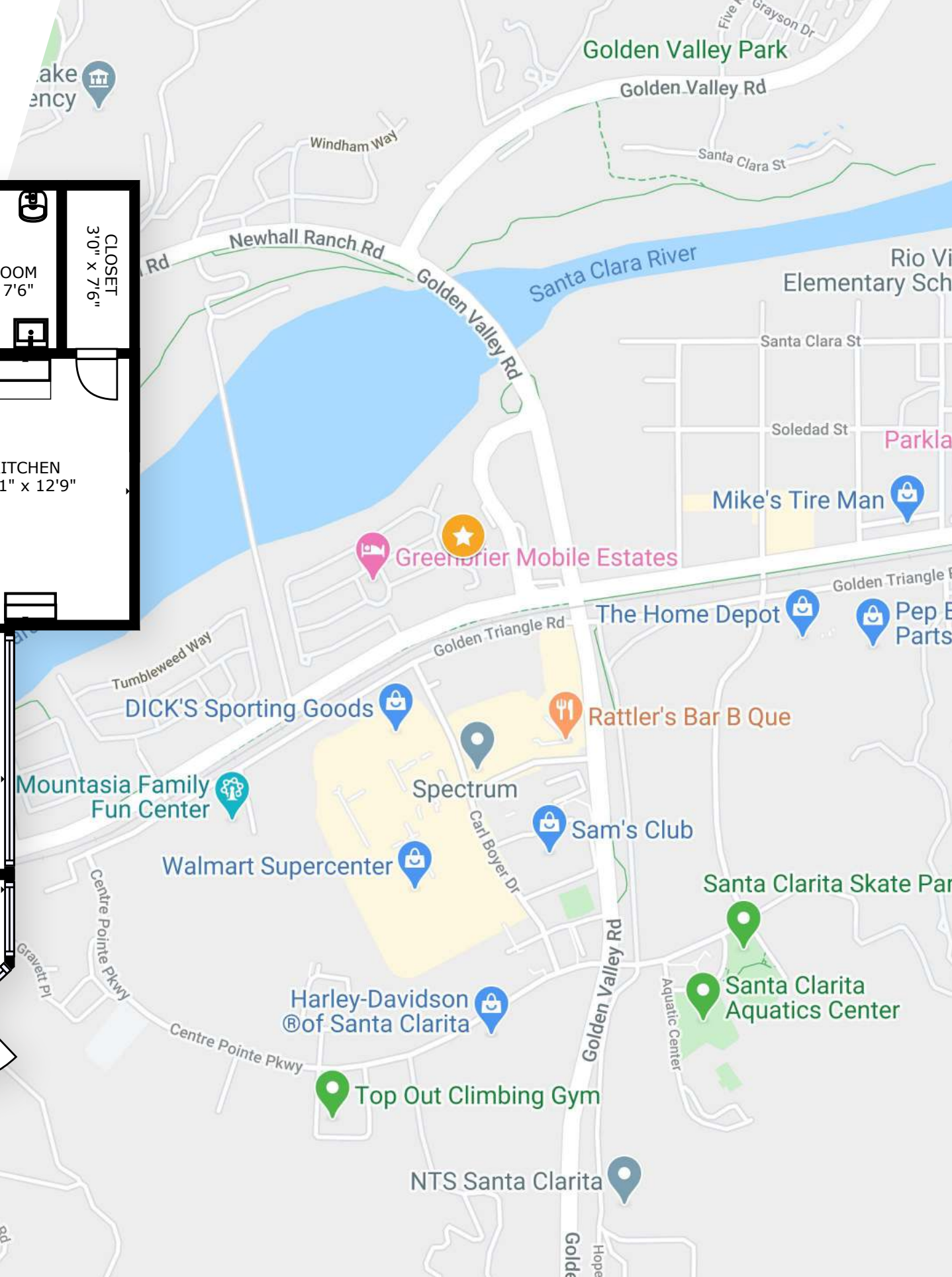


CURRENT - MAY 2020
AVAILABLE NOW

SCAN OR TAP
3D TOUR



26639 VALLEY CENTER DR. #108 FLOOR PLAN





26639 VALLEY CENTER DR #108, SANTA CLARITA, CA 91351



Robert A. Stratton Jr

CEO/Broker Officer

661-212-5699

Robert@StrattonInternational.com

CA DRE #01182000



The information in this brochure has been obtained from sources believed to be reliable. While we do not doubt its accuracy, we have not verified it and make no guarantee, warranty or representation about it. It is your responsibility to independently confirm its accuracy and completeness.