

2833-018-015

SIERRA HWY | CA-SR 14

SANTA CLARITA, CA 91321

AVAILABLE

STRATTON
INTERNATIONAL
COMMERCIAL REAL ESTATE SERVICES

STRATTONINTERNATIONAL.COM



2833-018-015
SIERRA HWY /
CA-SR 14
SANTA CLARITA, CA 91321

AVAILABLE



Daniel Stratton

Senior Associate - DRE #01986597
Cell: 661-414-6364 | Office: 661-702-9700
Daniel@StrattonInternational.com

The information in this brochure has been obtained from sources believed to be reliable. While we do not doubt its accuracy, we have not verified it and make no guarantee, warranty or representation about it. It is your responsibility to independently confirm its accuracy and completeness.





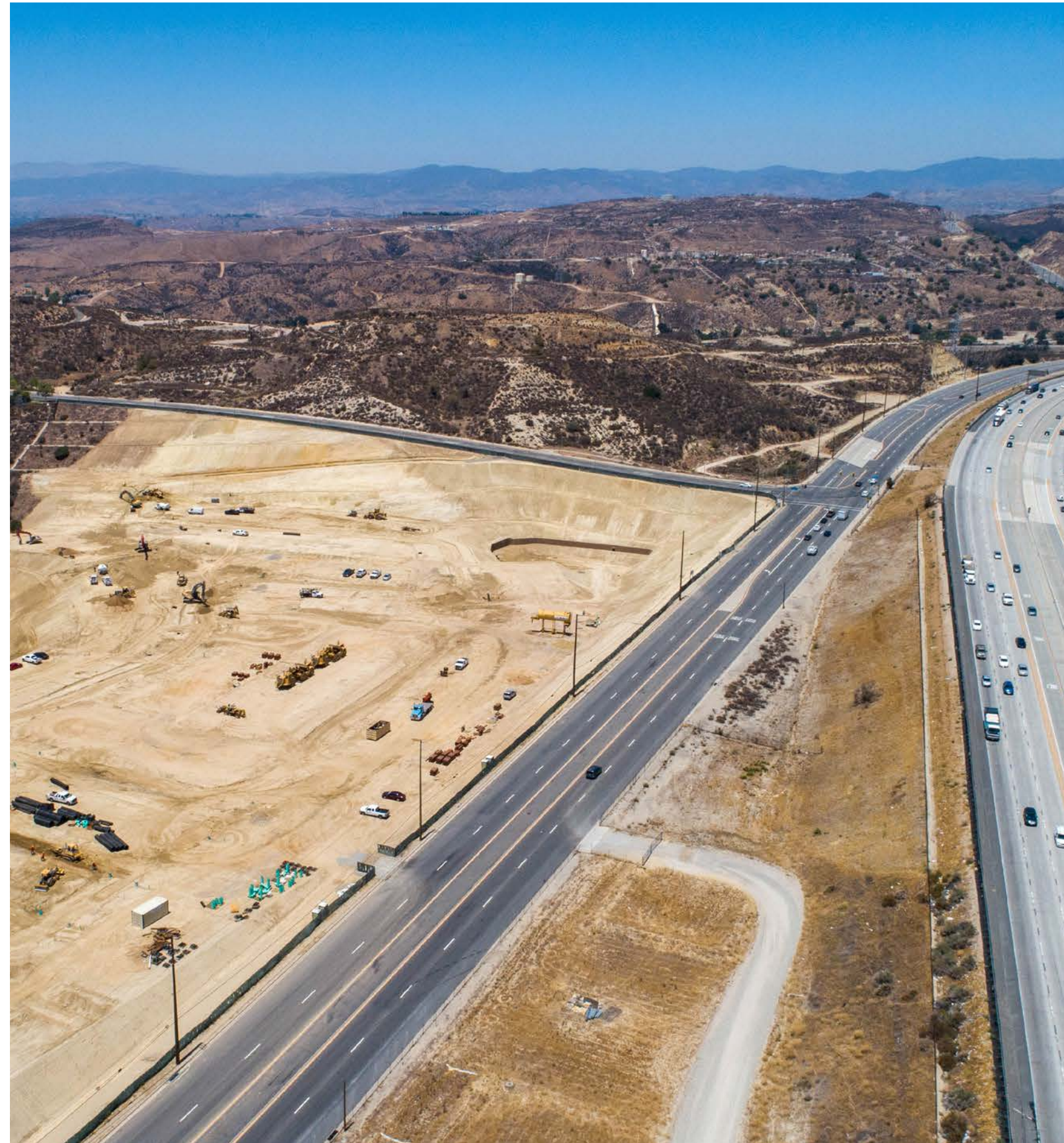
PROPERTY SUMMARY

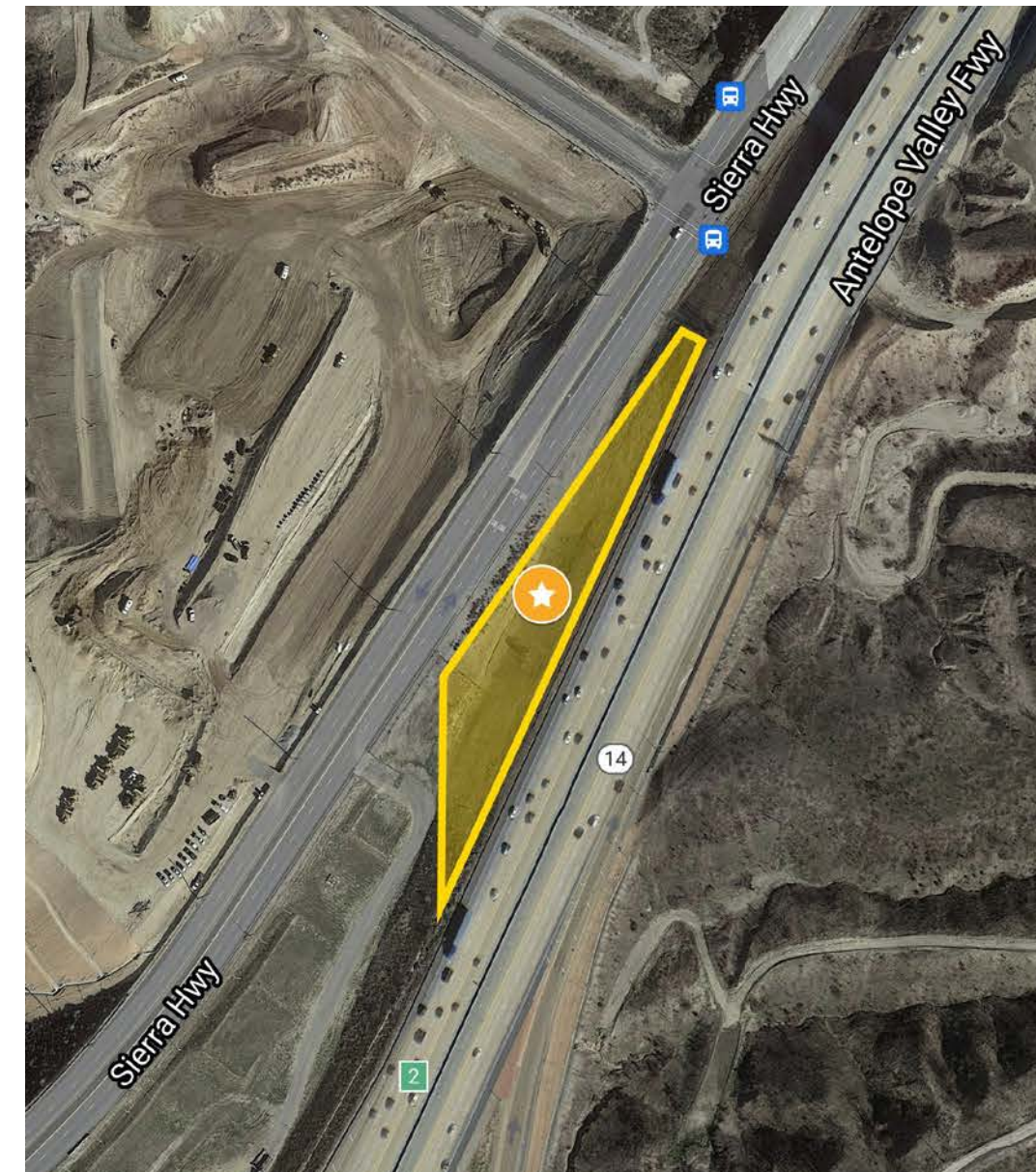
2833-018-015

REGIONAL COMMERCIAL LAND

Stratton International is pleased to present parcel 2833-018-015, an estimated 78,031 square feet or 1.79 acres of Regional Commercial zoned land located between Sierra Hwy and California SR-14 Hwy in Santa Clarita, CA. The property is just south of the corner of Dockweiler Dr and Sierra Hwy, and only 1/2 a mile from CA-SR 14 On/Off ramps. Developers will appreciate the large frontage on Sierra Hwy and abundant exposure to the 50+ million vehicles traveling on the CA SR-14 yearly. There is an active residential development across the street. Contact Daniel Stratton for more details regarding this rare availability.

PROPERTY TYPE..... LAND
LOT SIZE (ACRES)..... 1.79±
LOT SIZE (SQ.FT)..... 78,031±
ZONING..... SCCR
APN..... 2833-018-015





2833-018-15

SIERRA HWY | CA-SR 14

SANTA CLARITA, CA 91321

AVAILABLE

FOR MORE INFORMATION:

Daniel Stratton

Senior Associate

661-414-6364

Daniel@StrattonInternational.com

CA BRE #01986597

The information in this brochure has been obtained from sources believed to be reliable. While we do not doubt its accuracy, we have not verified it and make no guarantee, warranty or representation about it. It is your responsibility to independently confirm its accuracy and completeness.

