

555

MAIN ST

RIVERSIDE, CA 92501

FOR SALE



WARNING
NO OPEN FLAMES
NO SMOKING
NO BURNING
NO GRASS
NO OIL
NO GREASE
NO SOLIDS
NO LIQUIDS
NO FOOD
NO DRINKS
NO TOBACCO
NO ALCOHOL
NO WEAPONS
NO FIREARMS
NO EXPLOSIVES
NO HAZARDOUS
MATERIALS
NO VEHICLES
NO TRAILERS
NO BOATS
NO REFRIGERATORS
NO AIR CONDITIONERS
NO HEATERS
NO STOVE
NO WASHING MACHINES
NO DRYERS
NO FREEZERS
NO REFRIGERATORS
NO AIR CONDITIONERS
NO HEATERS
NO STOVE
NO WASHING MACHINES
NO DRYERS
NO FREEZERS

STRATTON
INTERNATIONAL
COMMERCIAL REAL ESTATE SERVICES

STRATTONINTERNATIONAL.COM



555
MAIN ST
RIVERSIDE, CA 92501



Ben Spring

Sales Associate - DRE #02121445

Cell: 661-803-7477 | Office: 661-702-9700

Ben@StrattonInternational.com

The information in this brochure has been obtained from sources believed to be reliable. While we do not doubt its accuracy, we have not verified it and make no guarantee, warranty or representation about it. It is your responsibility to independently confirm its accuracy and completeness.

STRATTON INTERNATIONAL, INC. | 555 MAIN ST, RIVERSIDE, CA 92501



STRATTON INTERNATIONAL, INC. | SINCE 1994



OFFERING SUMMARY

555 MAIN ST

INDUSTRIAL MANUFACTURING & DISTRIBUTION

Stratton International is pleased to present 555 Main St, a 20,000 sq.ft. industrial manufacturing and distribution building in the Springbrook Center in Riverside, CA. The building is on a fenced 70,132 sq.ft. lot on the corner of Main St and Garner Rd. The property is 100% owner/user occupied but can easily be reconfigured as four separate units each with their own entrance, large warehouse space, ground-level loading and 200 AMPS of power. The property is offered as a sale-leaseback, contact Ben Spring for more details.

BUILDING SQ.FT.	20,000
LOT SIZE SQ.FT.	70,132
YEAR BUILT	2001
FLOORS	1
UNITS	4
DRIVE-IN DOORS	5x 12' W x 14' H
APN(S)	246-260-041
CEILING HEIGHT	16'
PARKING SPACES	72 SPACES - 3.6 PER 1,000 SQ.FT.
ZONING	R1
POWER	800 AMPS

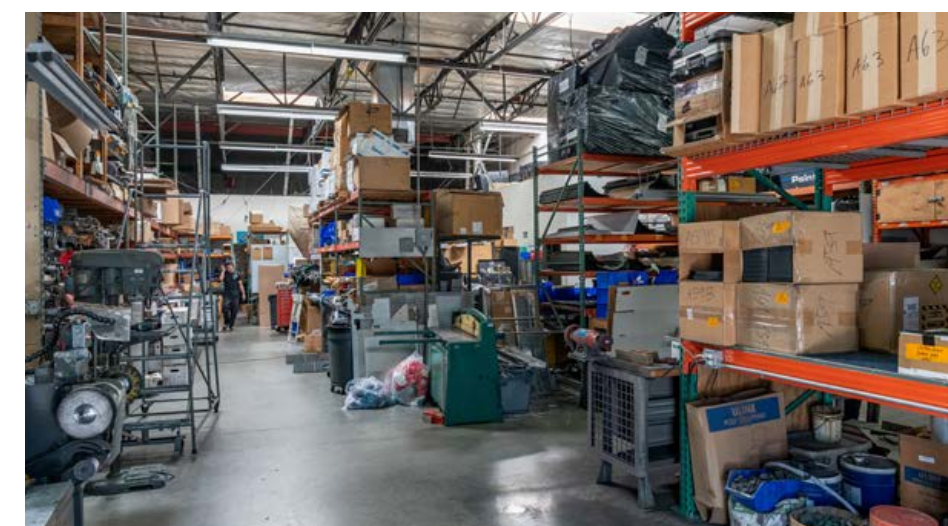
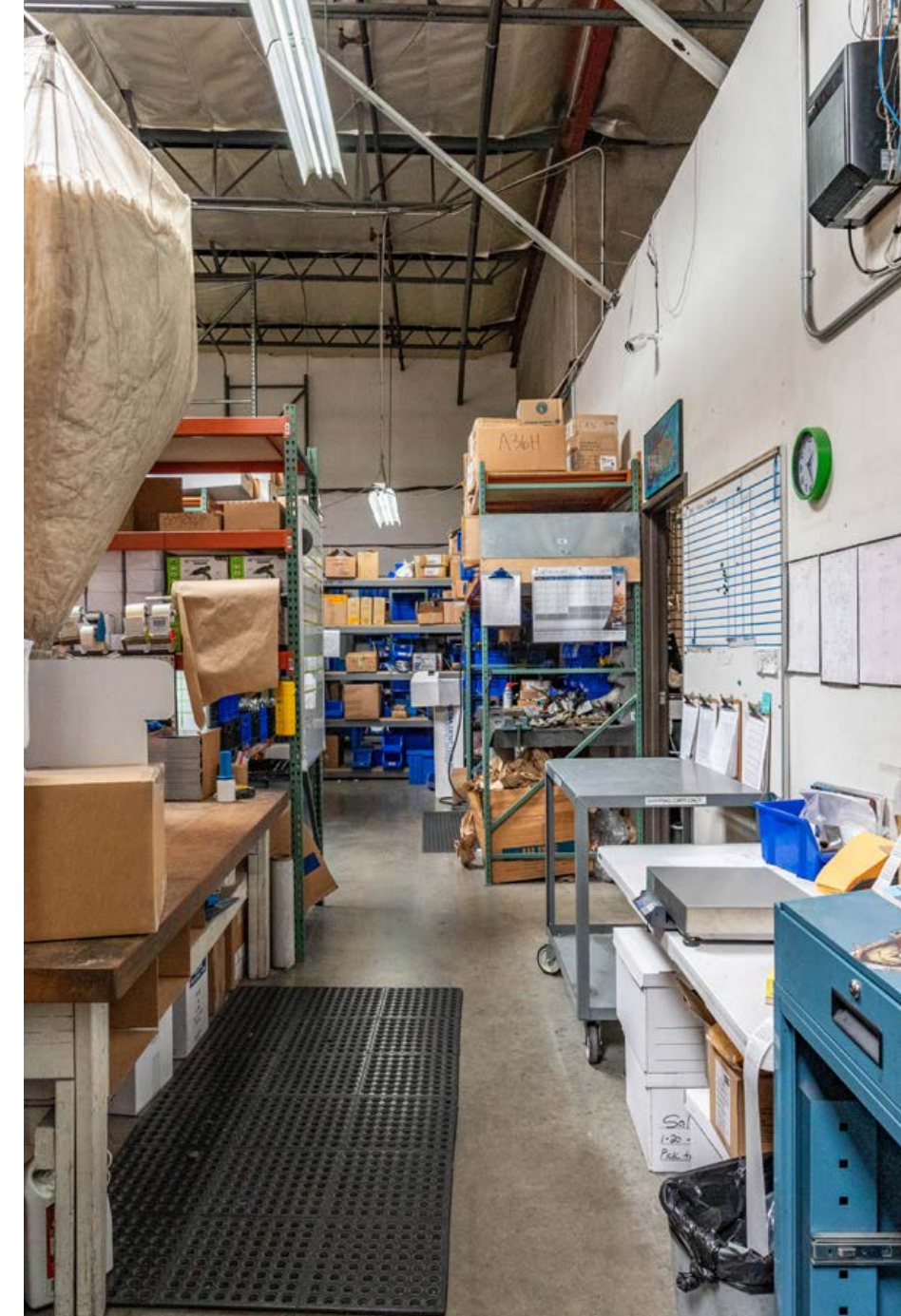




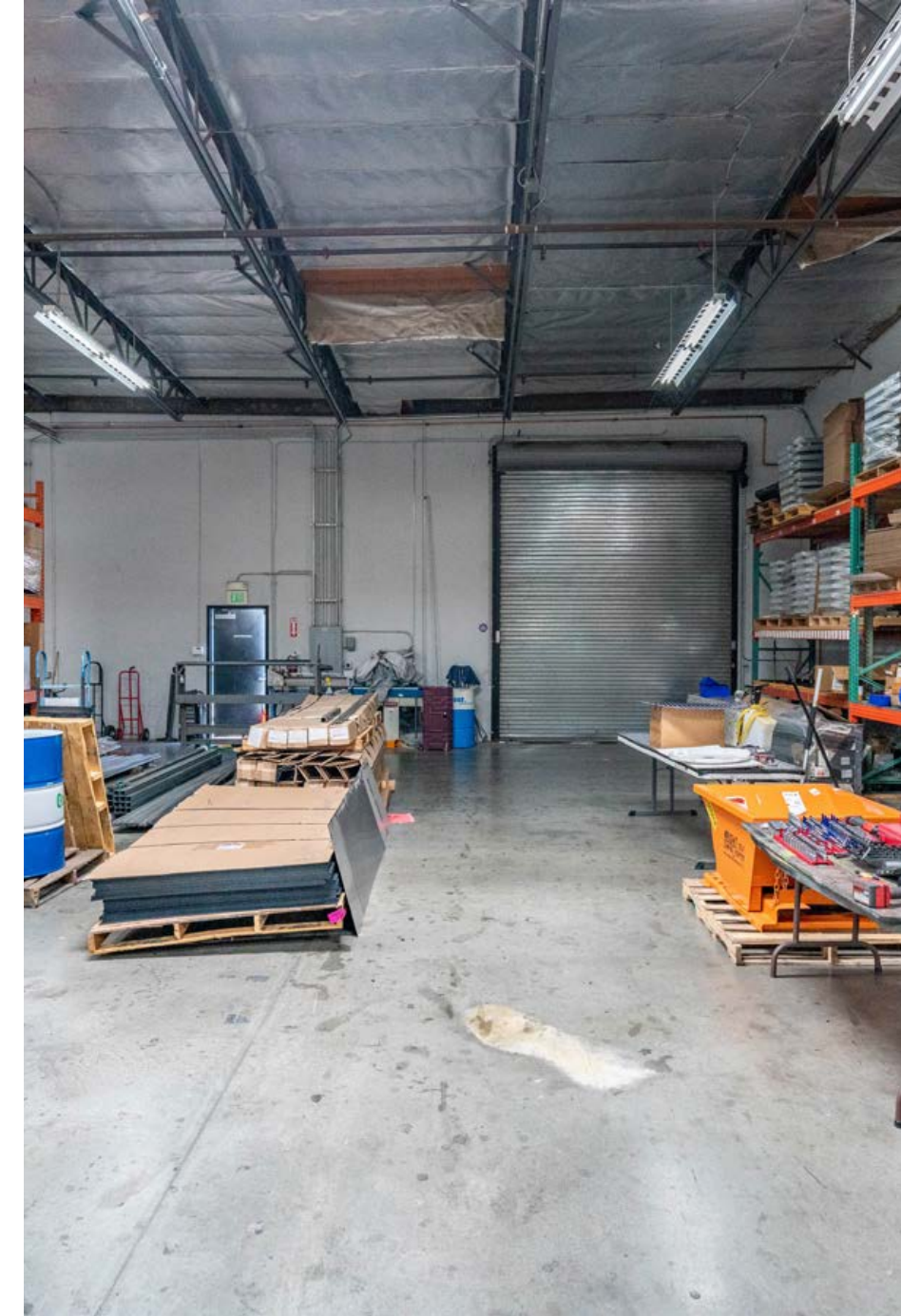






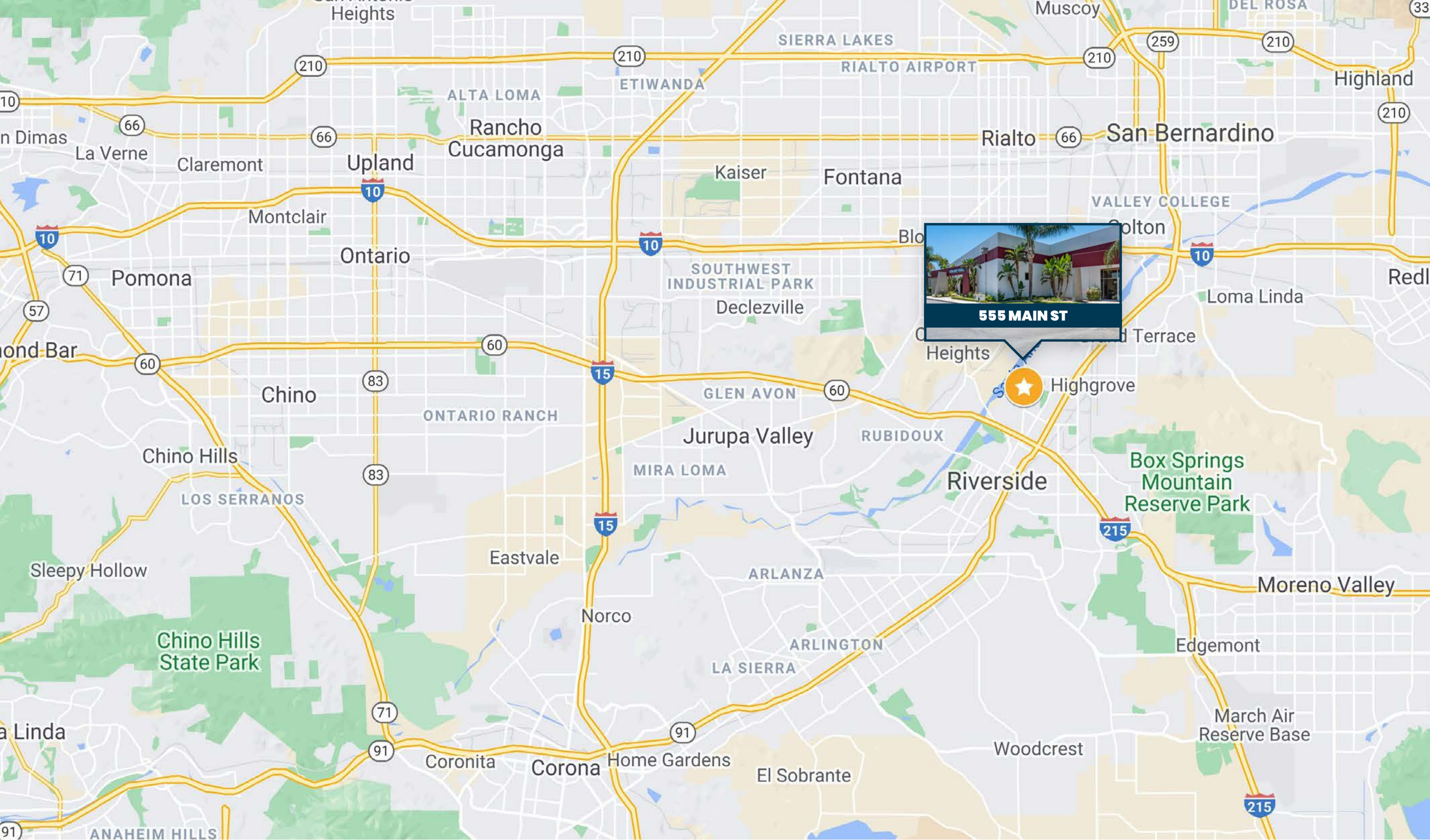






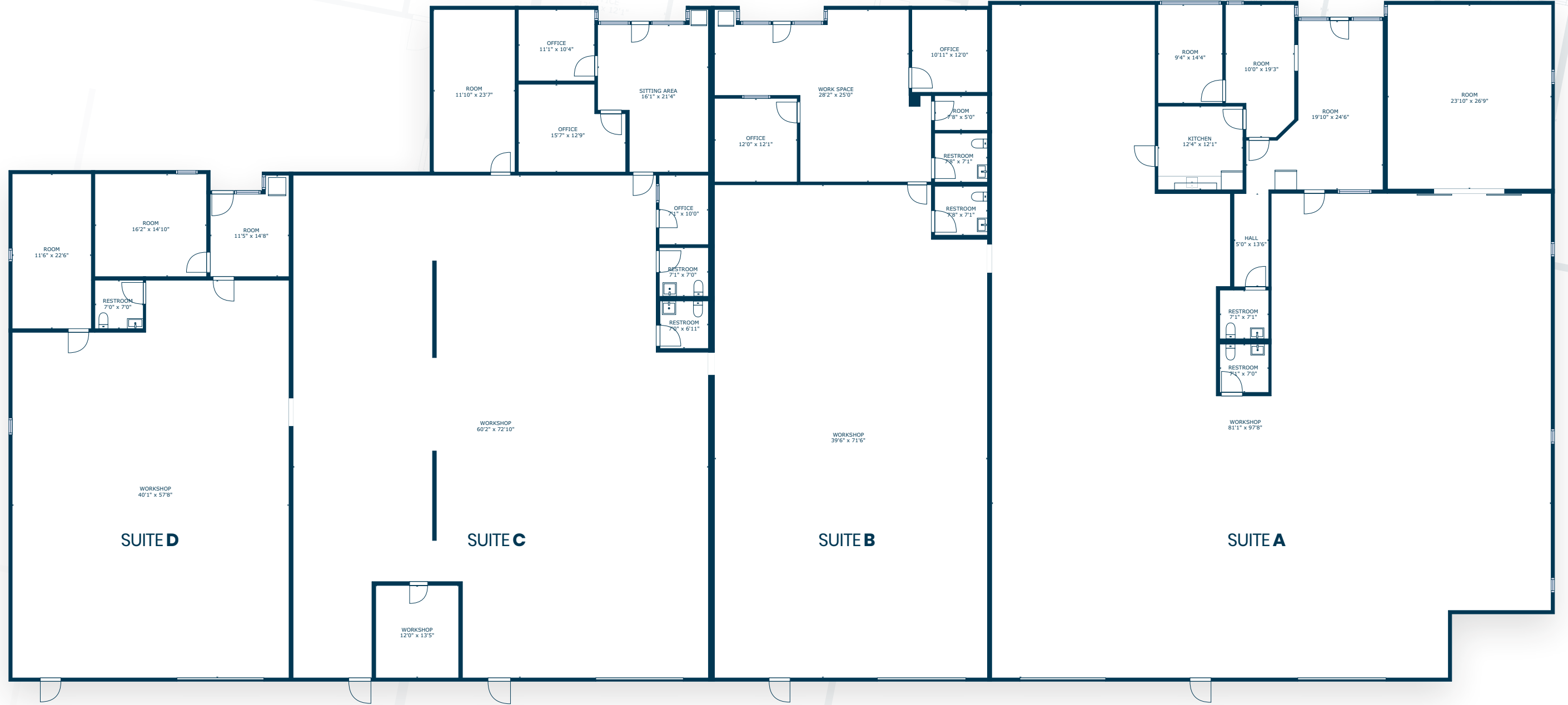




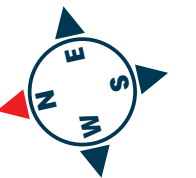


FLOOR PLAN

555 MAIN ST



3D TOUR
SCAN, TAP or CLICK!



555
MAIN ST
RIVERSIDE, CA 92501

FOR SALE

FOR MORE INFORMATION:

Ben Spring

Sales Associate

661-803-7477

Ben@StrattonInternational.com

CA BRE #02121445

The information in this brochure has been obtained from sources believed to be reliable. While we do not doubt its accuracy, we have not verified it and make no guarantee, warranty or representation about it. It is your responsibility to independently confirm its accuracy and completeness.

