

NORTH HOLLYWOOD INDUSTRIAL PORTFOLIO

NORTH HOLLYWOOD, CA 91605

FOR LEASE





NORTH HOLLYWOOD INDUSTRIAL PORTFOLIO

NORTH HOLLYWOOD, CA 91605

AVAILABLE



Daniel Stratton

Senior Associate - DRE #01986597

Cell: 661-414-6364 | Office: 661-702-9700

Daniel@StrattonInternational.com

The information in this brochure has been obtained from sources believed to be reliable. While we do not doubt its accuracy, we have not verified it and make no guarantee, warranty or representation about it. It is your responsibility to independently confirm its accuracy and completeness.

STRATTON INTERNATIONAL, INC. | 11817 SHERMAN WAY, 7210 HINDS AVE, 7218 HINDS AVE



7218
HINDS AVE
4,250 BLDG
6,534 SF LAND

7210
HINDS AVE
2,688 BLDG
4,792 SF LAND

11817
SHERMAN WAY
3,800 BLDG
7,405 SF LAND

STRATTON INTERNATIONAL, INC. | SINCE 1994



OFFERING SUMMARY

NORTH HOLLYWOOD INDUSTRIAL PORTFOLIO

THREE INDUSTRIAL PROPERTY PORTFOLIO

Stratton International is pleased to present the opportunity to lease all or part of a three property industrial portfolio located on the corner of Sherman Way and Hinds Ave. The portfolio consists of three separate parcels for a total of 10,738 sq.ft. of buildings on 18,731 sq.ft. of land. There are two secured lots with parking and additional parking available street side. All properties in the portfolio are M2 zoned with large street frontages and ample room for signage. Contact Daniel Stratton for more details regarding leasing part or the whole portfolio.

11817 SHERMAN WAY

BUILDING SQ.FT.....	3,800±
LOT SIZE SQ.FT.....	7,405±
TRUCK DOORS.....	0

7210 HINDS AVE

BUILDING SQ.FT.....	2,688±
LOT SIZE SQ.FT.....	4,792±
TRUCK DOORS.....	2X GROUND-LEVEL

7218 HINDS AVE

BUILDING SQ.FT.....	4,250±
LOT SIZE SQ.FT.....	6,534±
TRUCK DOORS.....	2X GROUND-LEVEL





11817

SHERMAN WAY

3,800 SQ.FT.
BUILDING SIZE

7,405 SQ.FT.
LOT SIZE

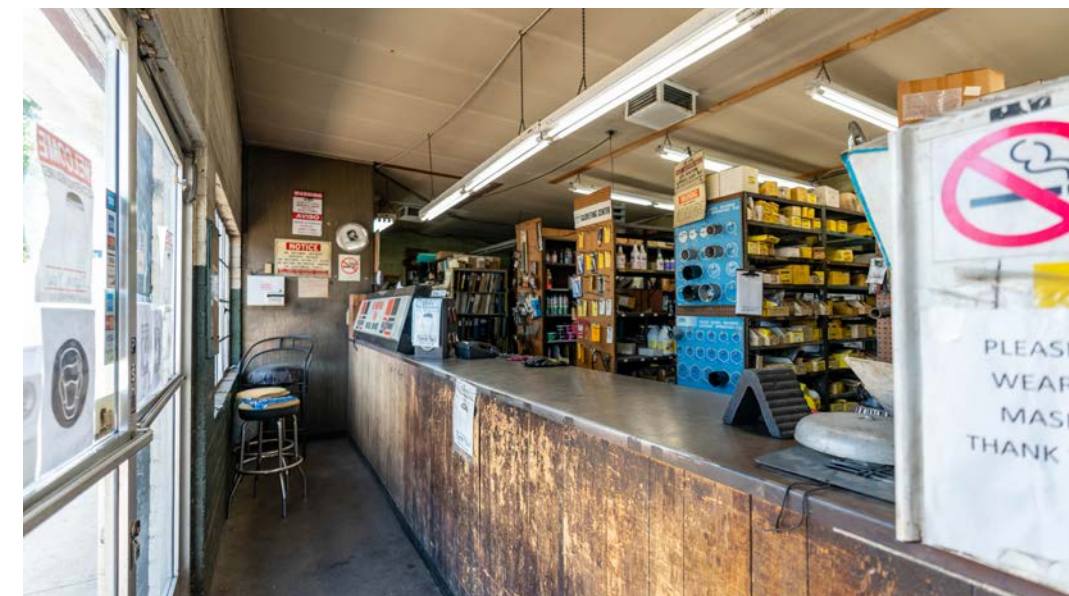
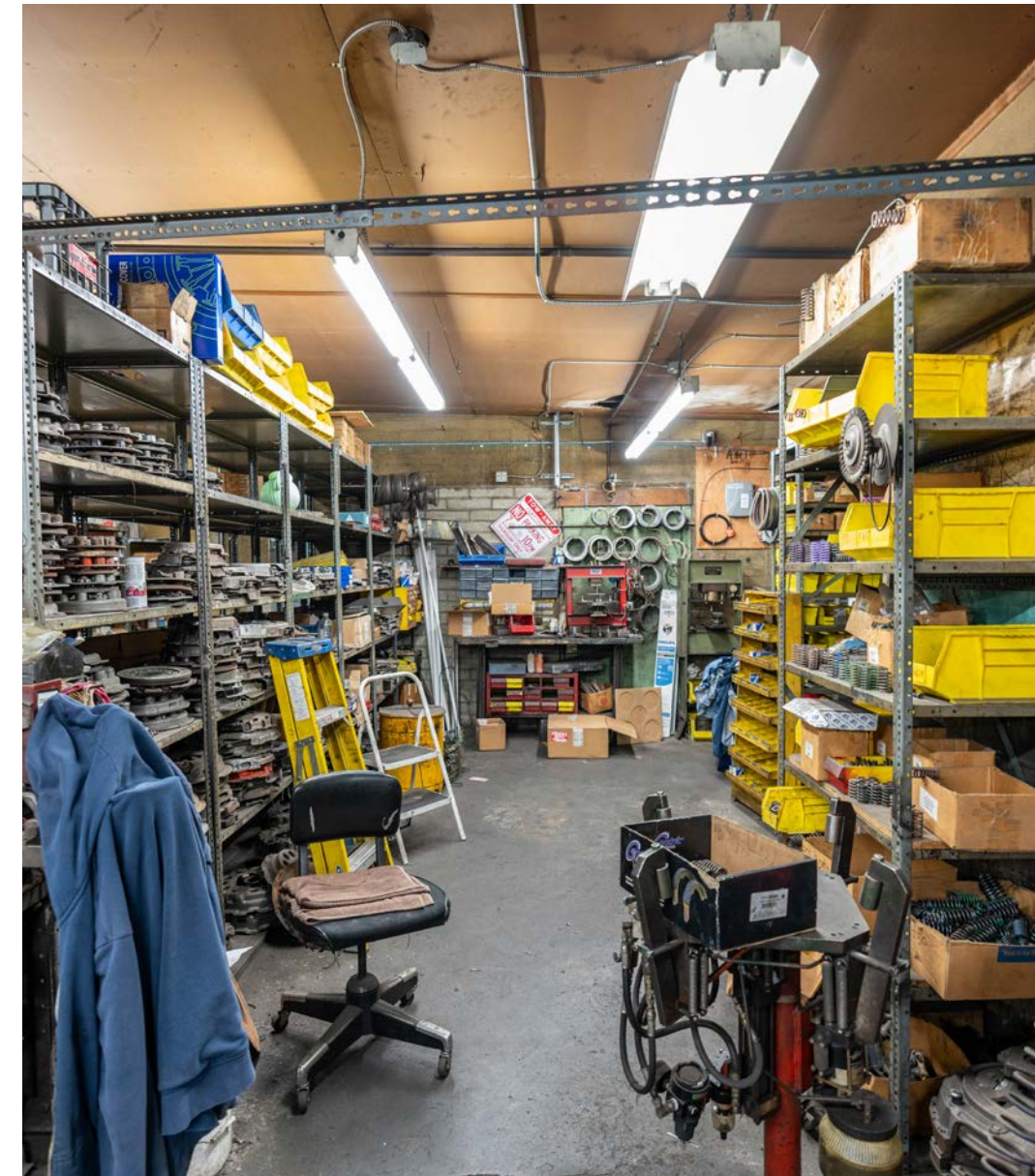
1949
YEAR BUILT

12' FT
BUILDING HEIGHT

0
TRUCK DOORS

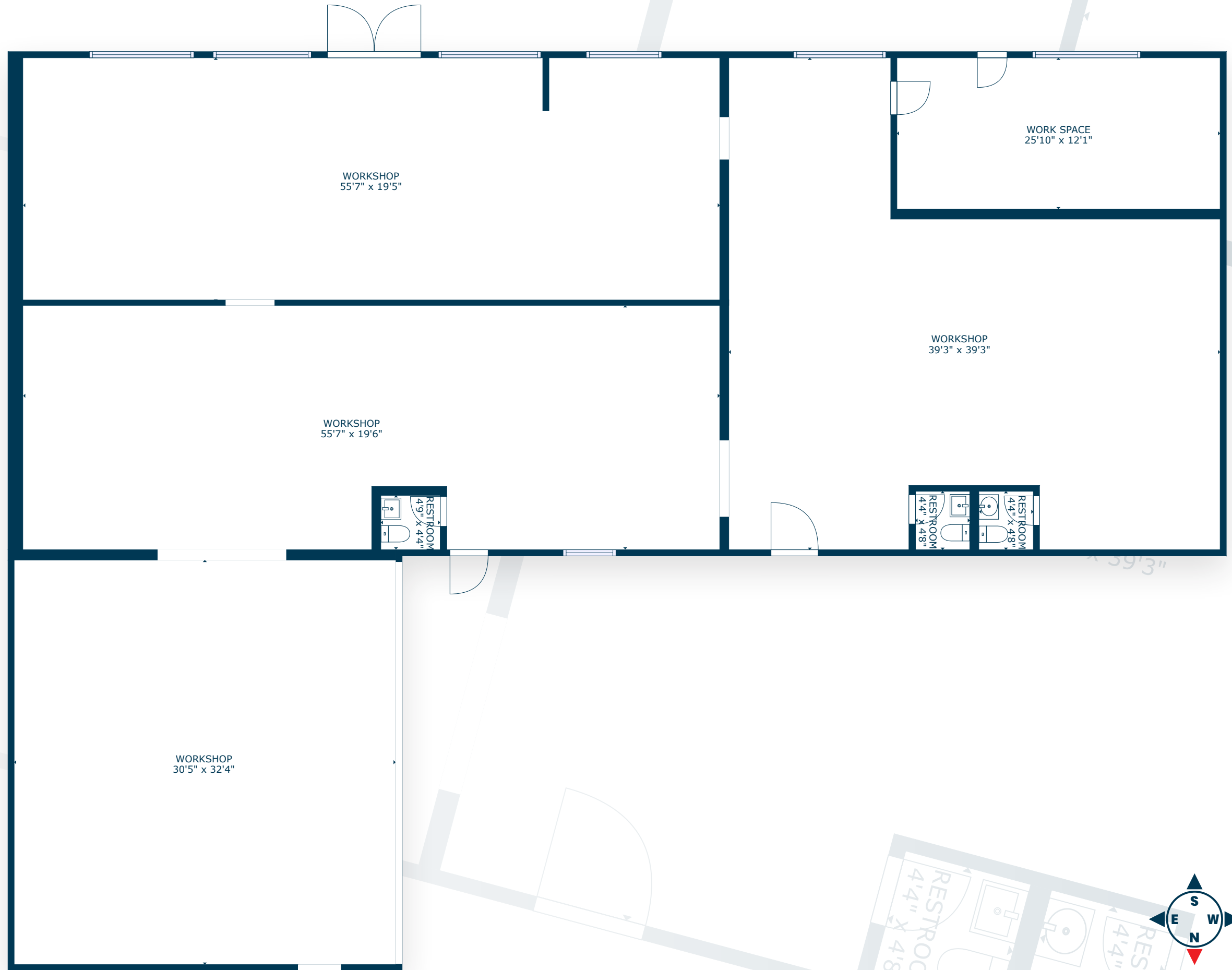
LAM2
ZONING

2317-019-018
PARCEL NO.

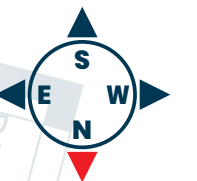


FLOOR PLANS

11817 SHERMAN WAY



3D TOUR
SCAN, TAP or CLICK!





7210

HINDS AVE

2,688 SQ.FT.
BUILDING SIZE

4,792 SQ.FT.
LOT SIZE

1960
YEAR BUILT

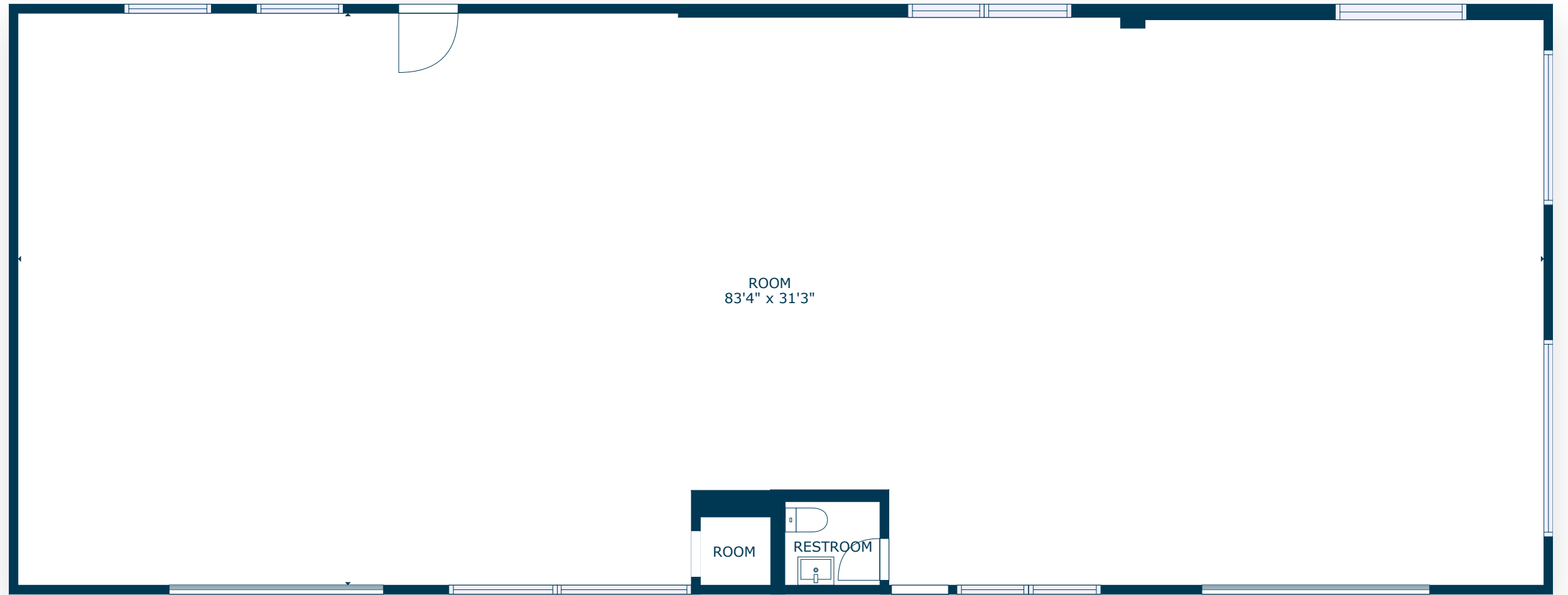
14' FT
BUILDING HEIGHT

2
TRUCK DOORS

LAM2
ZONING

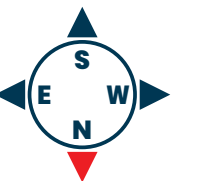
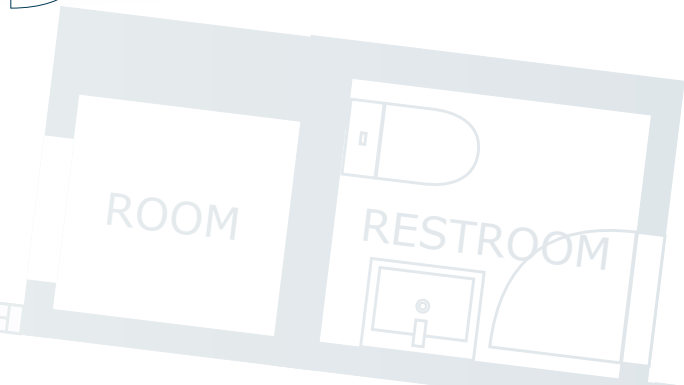
2317-019-017
PARCEL NO.

7210 HINDS AVE



3D TOUR

SCAN, TAP or CLICK!





7218

HINDS AVE

4,250 SQ.FT.
BUILDING SIZE

6,534 SQ.FT.
LOT SIZE

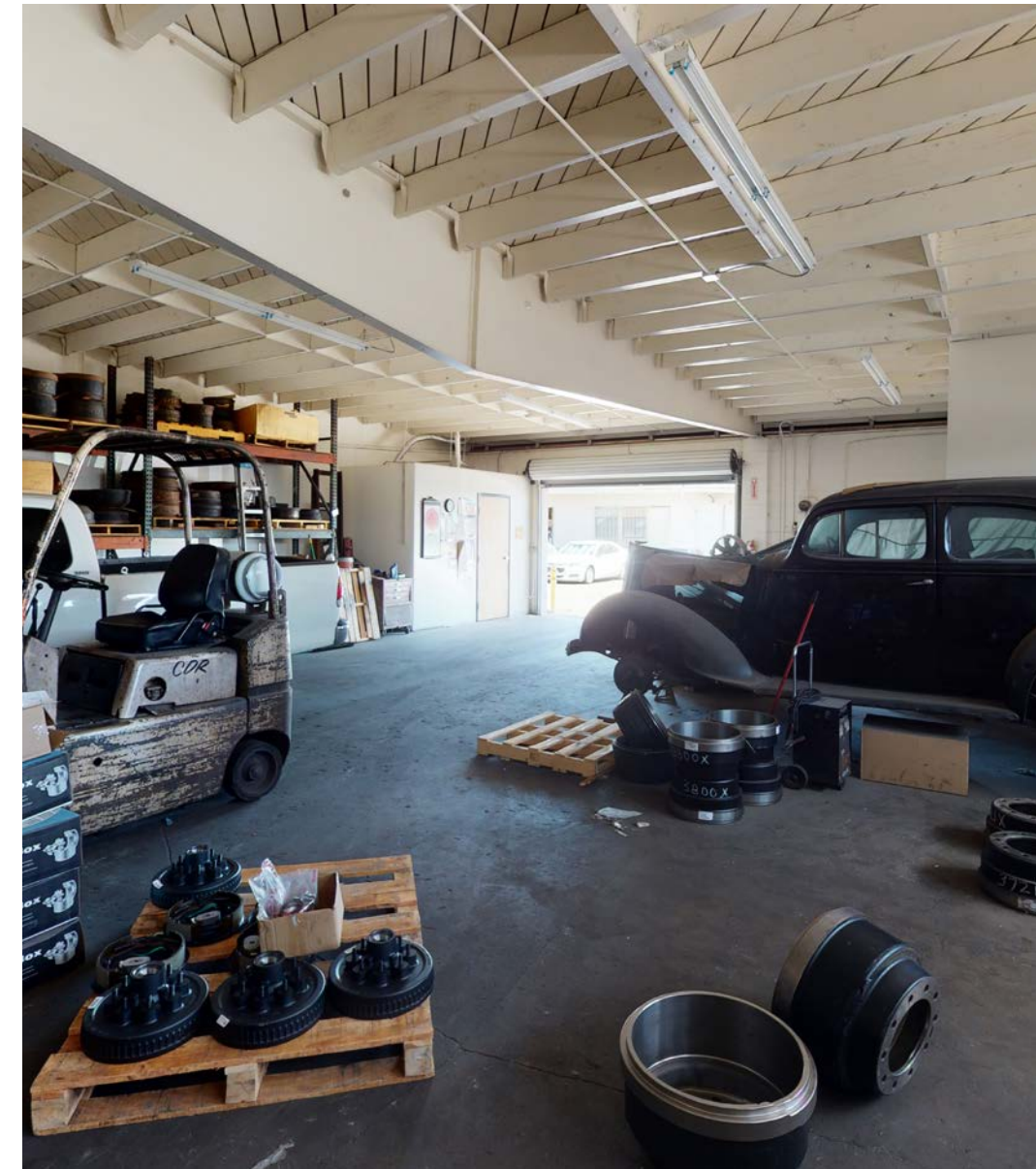
1958
YEAR BUILT

14' FT
BUILDING HEIGHT

2
TRUCK DOORS

LAM2
ZONING

2317-019-016
PARCEL NO.



FLOOR PLANS

7218 HINDS AVE



3D TOUR
SCAN, TAP or CLICK!



Sherman
11900
WY



NO PARKING
10:00 AM - 5:00 PM
MON - FRI

AUTO
BODY



NORTH HOLLYWOOD INDUSTRIAL PORTFOLIO

NORTH HOLLYWOOD, CA 91605

FOR LEASE

FOR MORE INFORMATION:

Daniel Stratton

Senior Associate

661-414-6364

Daniel@StrattonInternational.com

CA BRE #01986597

The information in this brochure has been obtained from sources believed to be reliable. While we do not doubt its accuracy, we have not verified it and make no guarantee, warranty or representation about it. It is your responsibility to independently confirm its accuracy and completeness.

