

# 11811 SHERMAN WAY

NORTH HOLLYWOOD, CA 91605

FOR LEASE





**11811**  
**SHERMAN WAY**  
NORTH HOLLYWOOD, CA 91605

**AVAILABLE**



**Daniel Stratton**  
Senior Associate - DRE #01986597  
Cell: 661-414-6364 | Office: 661-702-9700  
Daniel@StrattonInternational.com

The information in this brochure has been obtained from sources believed to be reliable. While we do not doubt its accuracy, we have not verified it and make no guarantee, warranty or representation about it. It is your responsibility to independently confirm its accuracy and completeness.

**STRATTON INTERNATIONAL, INC.**



**11811**  
SHERMAN WAY  
**3,800 BLDG**  
**7,405 SF LAND**

**HINDS AVE**

**SHERMAN WAY**



OFFERING SUMMARY

# 11811 SHERMAN WAY

**NORTH HOLLYWOOD, CA 91605**

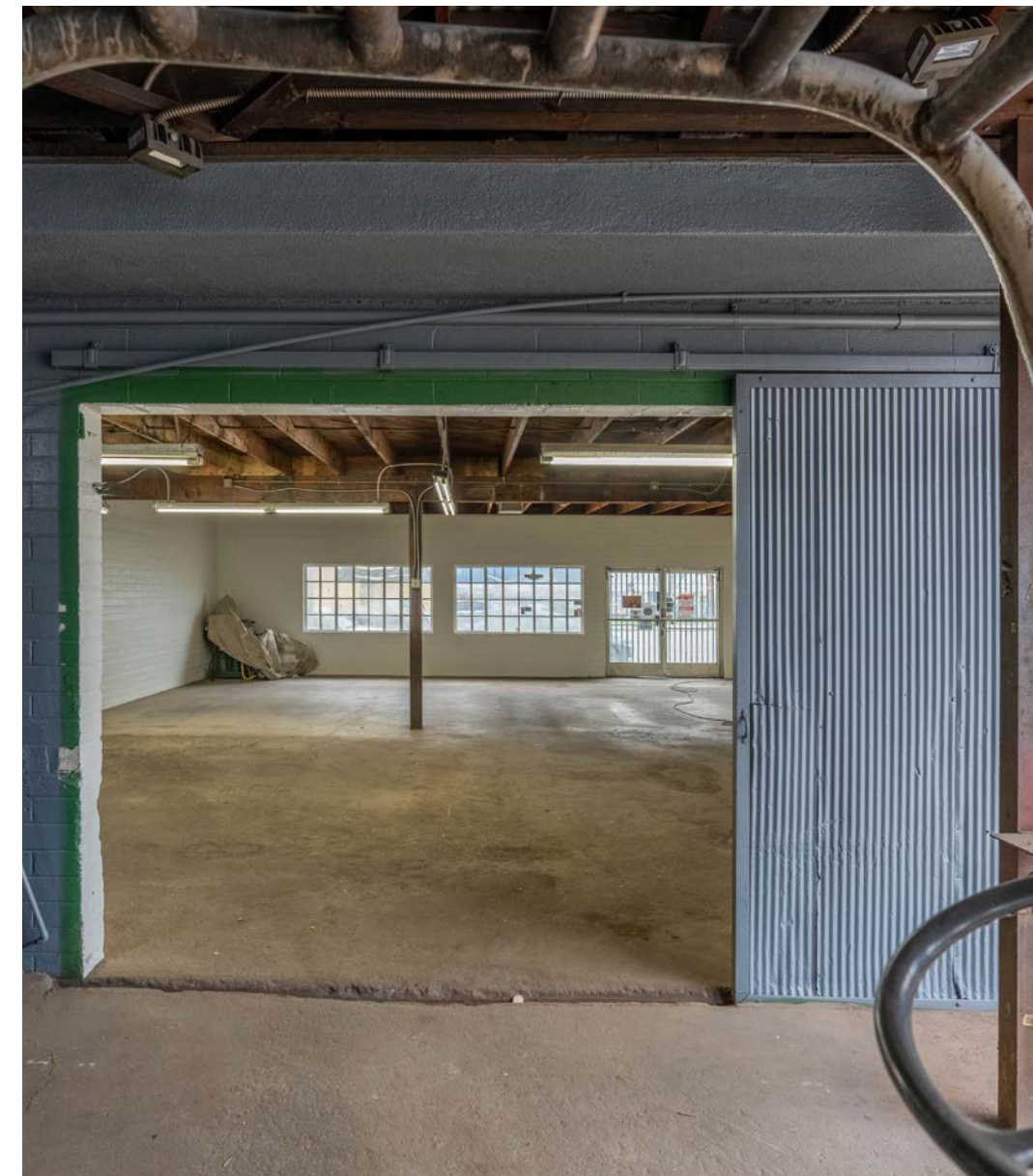
Stratton International is pleased to present 11811 Sherman Way, a 3,800 sq.ft. single-tenant industrial building on a total of 7,405 sq.ft of land. The building features one drive-thru door with a building height of 12’.

The lot is secured by gate with parking + additional parking available street side. This corner-lot property features large street frontages and ample room for signage. Contact Daniel Stratton for more details regarding leasing this prime industrial space.

<b>BUILDING SQ.FT</b> .....	3,800±
<b>LOT SIZE SQ.FT</b> .....	7,405±
<b>FLOORS</b> .....	1
<b>GROUND-LEVEL DOOR</b> .....	1 X 7’8”X10’
<b>YEAR BUILT</b> .....	1949
<b>APN(S)</b> .....	2317-019-018
<b>ZONING</b> .....	LAM2
<b>BUILDING HEIGHT</b> .....	12’
<b>STREET FRONTAGE</b> .....	95’ ON SHERMAN WAY 74’ ON HINDS AVE



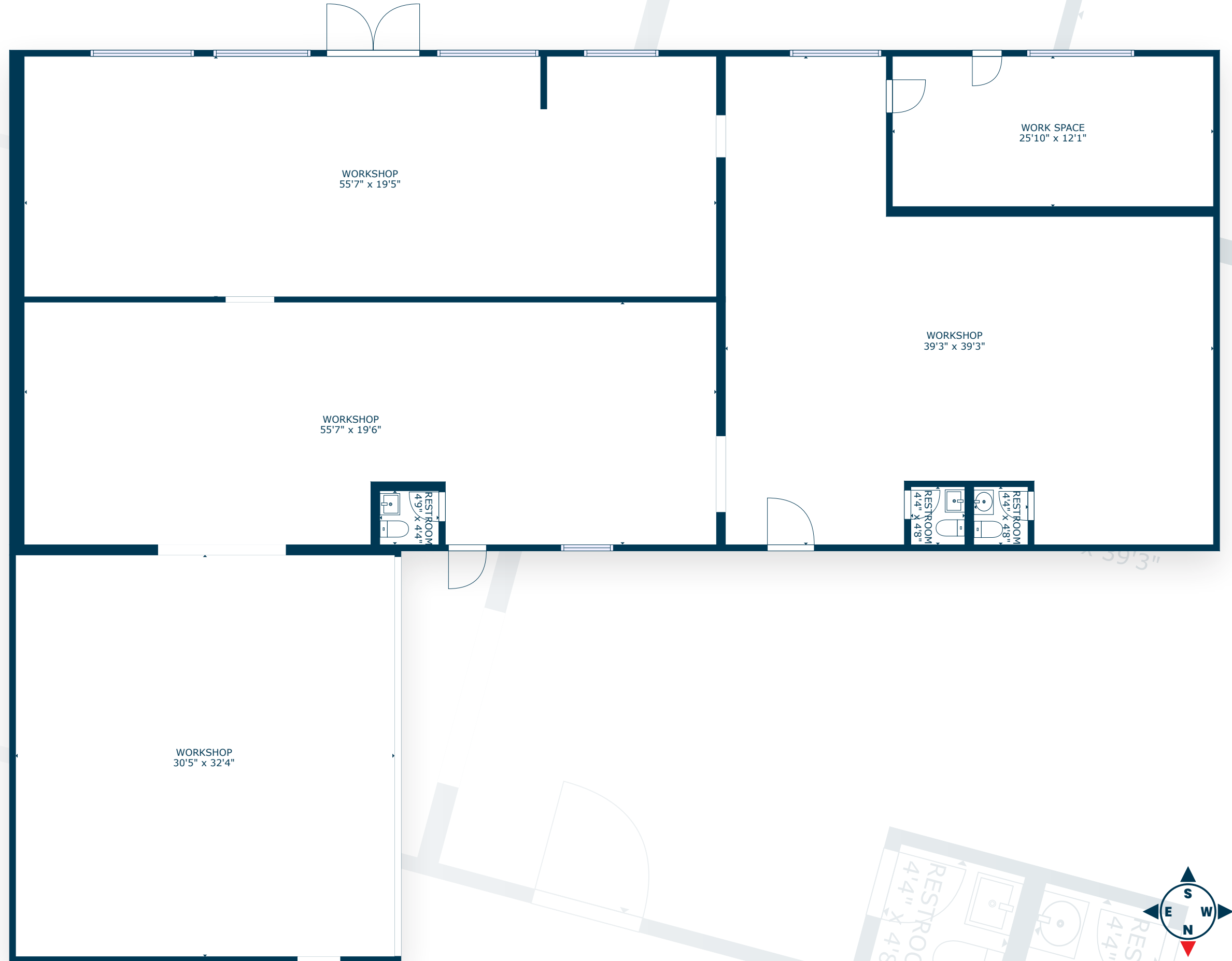






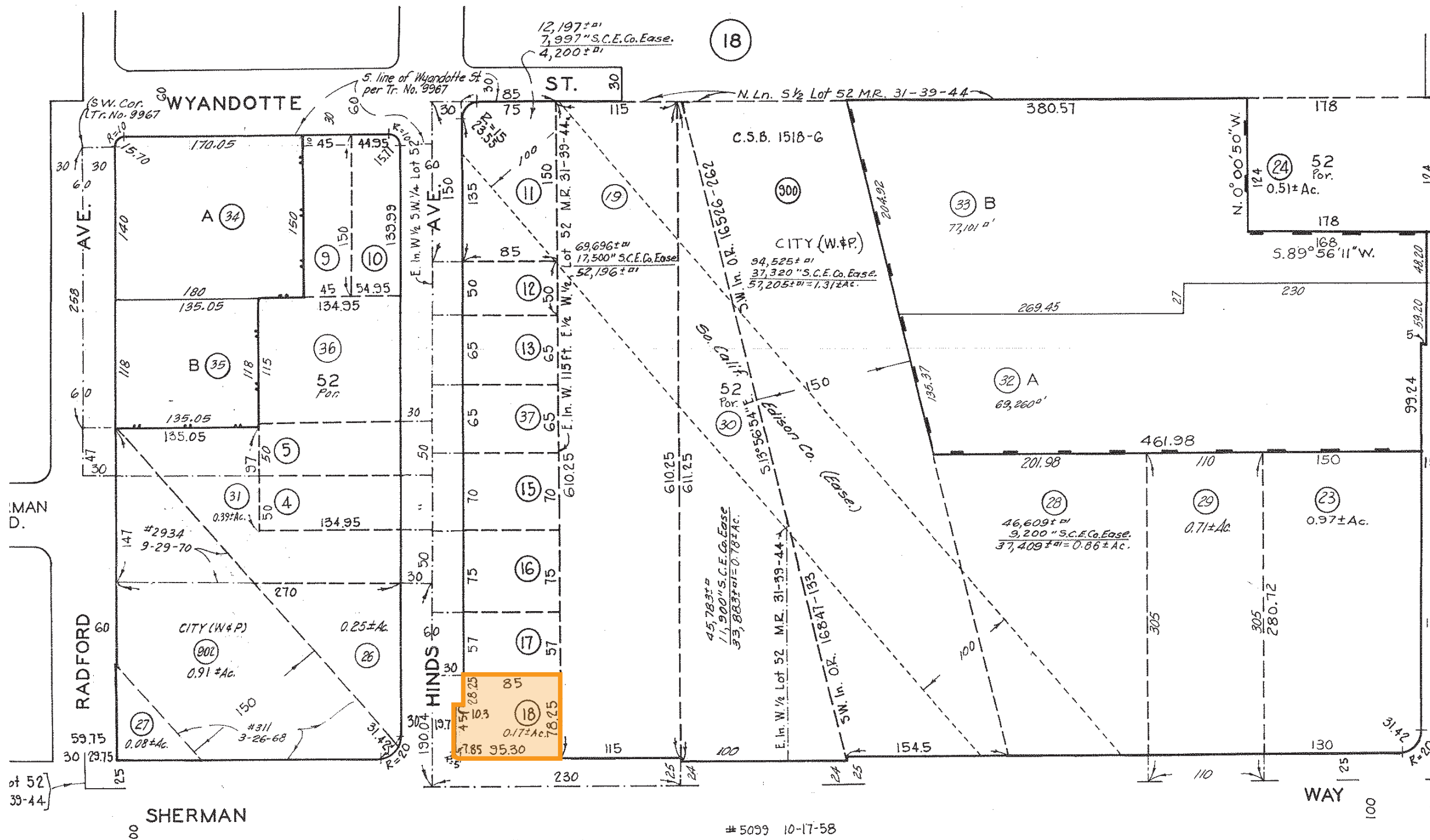
**11811**  
**SHERMAN WAY**  
NORTH HOLLYWOOD, CA 91605

**FLOOR PLAN**



SCAN, TAP or CLICK!



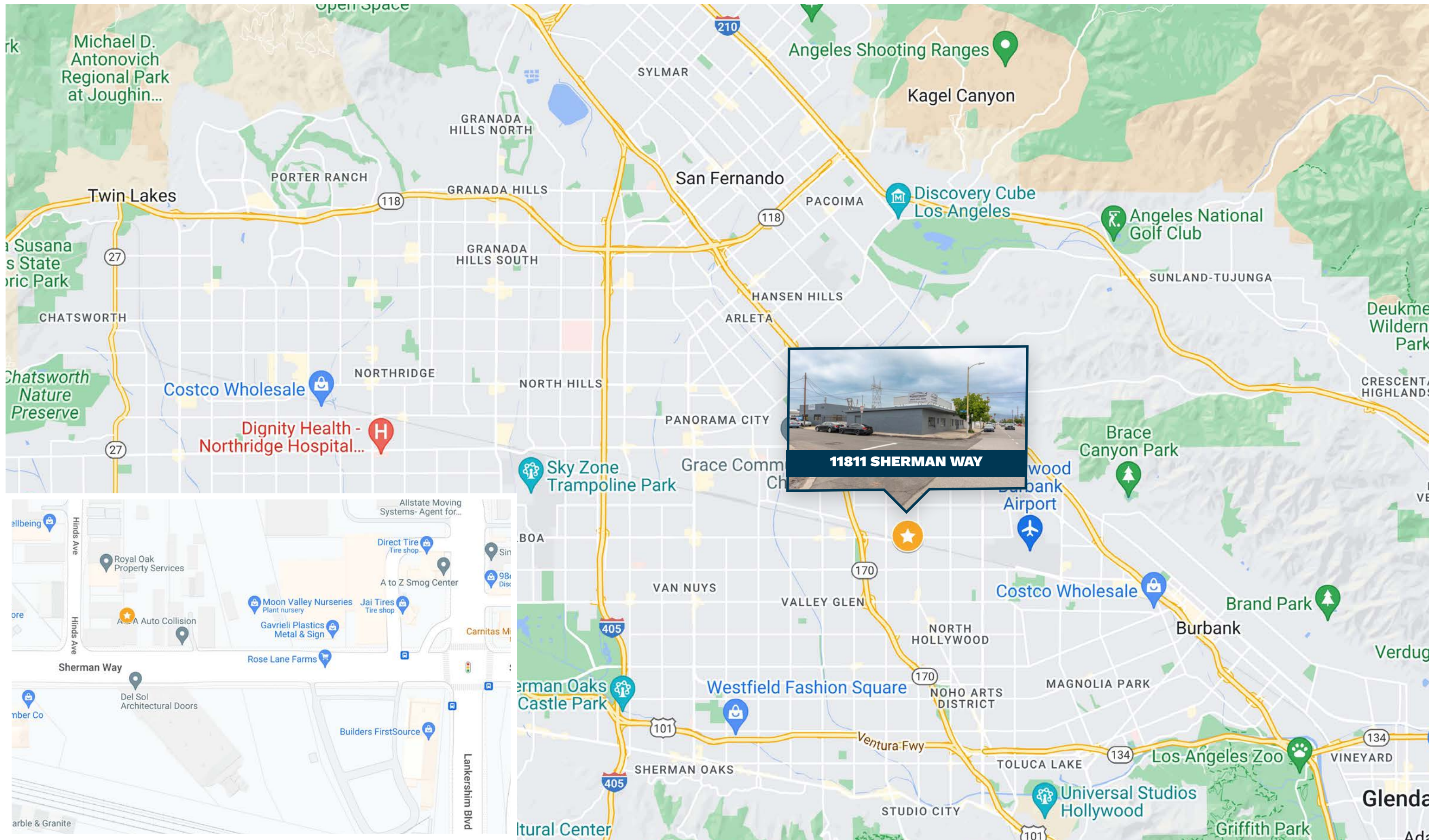


701  
7  
86  
86  
93111606  
94122002  
90  
90  
100  
100  
110  
110  
BLVD.  
LANKERSHIM  
C.F. 2052  
BK. 2316

11811 SHERMAN WAY

PARCEL MAP







# 11811 SHERMAN WAY

NORTH HOLLYWOOD, CA 91605

## FOR LEASE

PREPARED BY



**Daniel Stratton**

Vice President - DRE #01986597

Cell: 661-414-6364 | Office: 661-702-9700

[Daniel@StrattonInternational.com](mailto:Daniel@StrattonInternational.com)

---

The information in this brochure has been obtained from sources believed to be reliable. While we do not doubt its accuracy, we have not verified it and make no guarantee, warranty or representation about it. It is your responsibility to independently confirm its accuracy and completeness.

All product names, logos, and brands are property of their respective owners. All company, product and service names used in this brochure are for identification purposes only. Use of these names, logos, and brands does not imply endorsement.