

514-518

ROSEMONT AVE

3,950 SQ.FT TRIPLEX ON 5,990 SQ.FT. LOT



STRATTON
INTERNATIONAL



514-518

ROSEMONT AVE

LOS ANGELES, CA 90026



Robert Stratton

CEO/President - DRE #01182000

Cell: 661-212-5699 | Office: 661-702-9700

Robert@StrattonInternational.com

The information in this brochure has been obtained from sources believed to be reliable. While we do not doubt its accuracy, we have not verified it and make no guarantee, warranty or representation about it. It is your responsibility to independently confirm its accuracy and completeness.

STRATTON INTERNATIONAL, INC.



RESIDENTIAL - TRIPLEX

3 UNITS - 7BD - 6.5BA

#514 - 1,250 SF - 2BD - 2.5BA

#516 - 600 SF - 1BD - 1BA

#518 - 2,100 SF - 4BD - 3BA



OFFERING SUMMARY

514-518 ROSEMONT AVE LOS ANGELES, CA 90026

Stratton International is pleased to present 514-518 Rosemont Ave, a meticulously renovated triplex located in the Silver Lake area of Los Angeles, CA. This 3,950 sq.ft. multi-family residential property is on a 5,990 sq.ft. lot with gate secured parking.

All three units feature beautiful wood flooring, new paint, in-unit washer & dryer, air-conditioning, remodeled bathroom(s) and a brand new kitchen with custom cabinetry, porcelain counters and all new stainless-steel appliances.

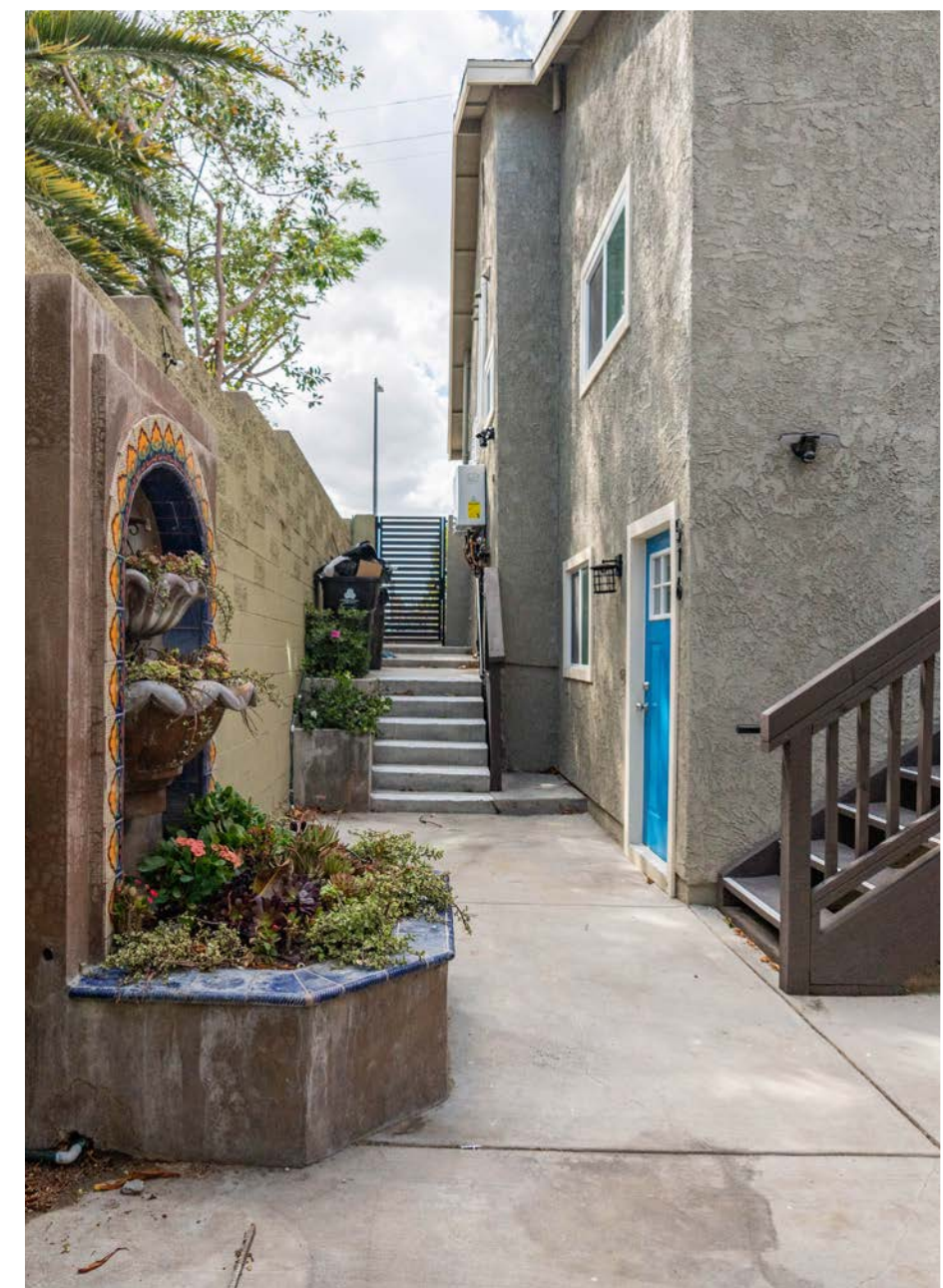
BUILDING SQ.FT	3,950±
LOT SIZE ACRES	5,990±
YEAR BUILT	1918
FLOORS	2
APN(S)	5402-040-010
ZONING	LARD2

#514	#516	#518
1,250 SF	600 SF	2,100 SF
2BD	1BD	4BD
2.5BA	1BA	3BA



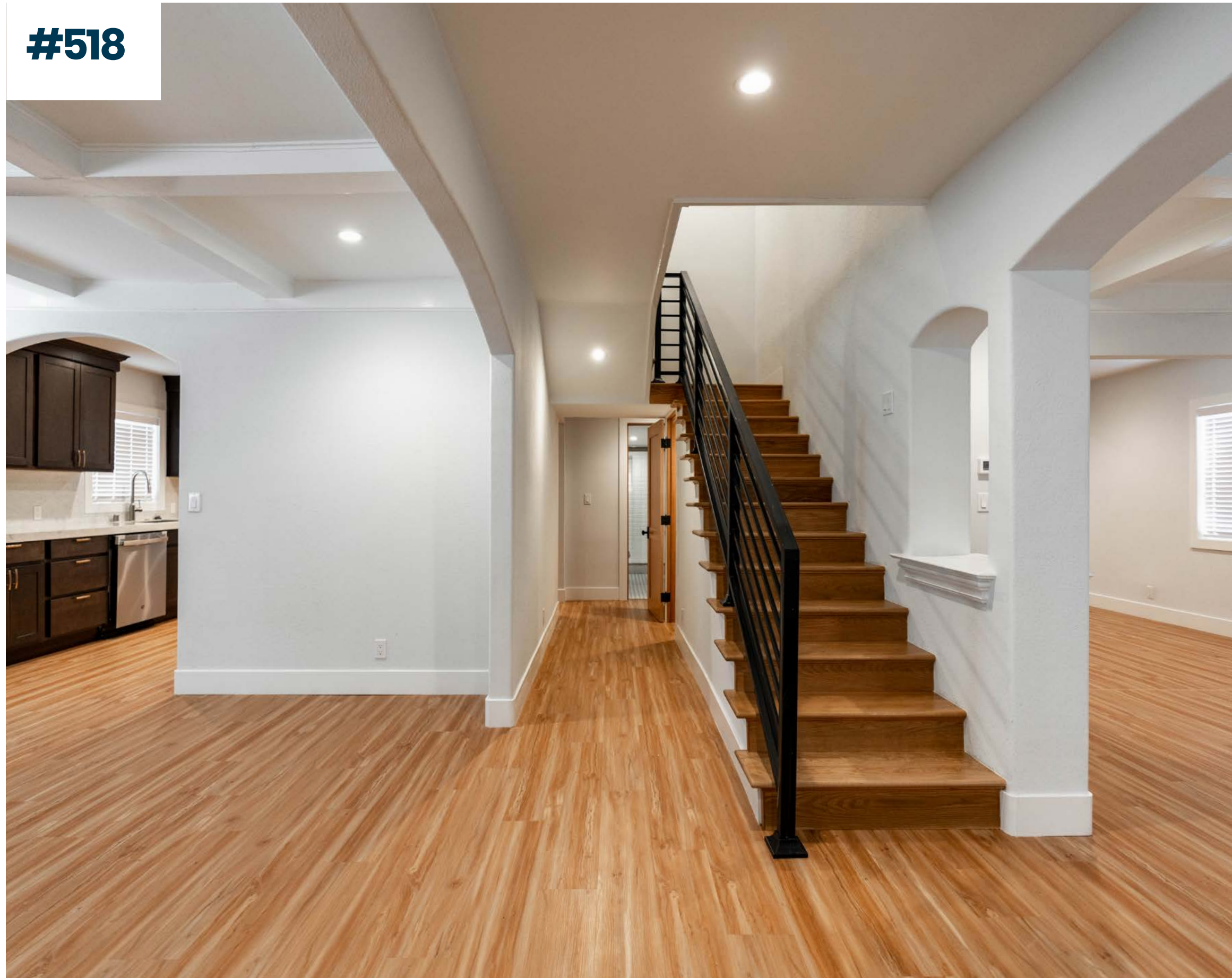








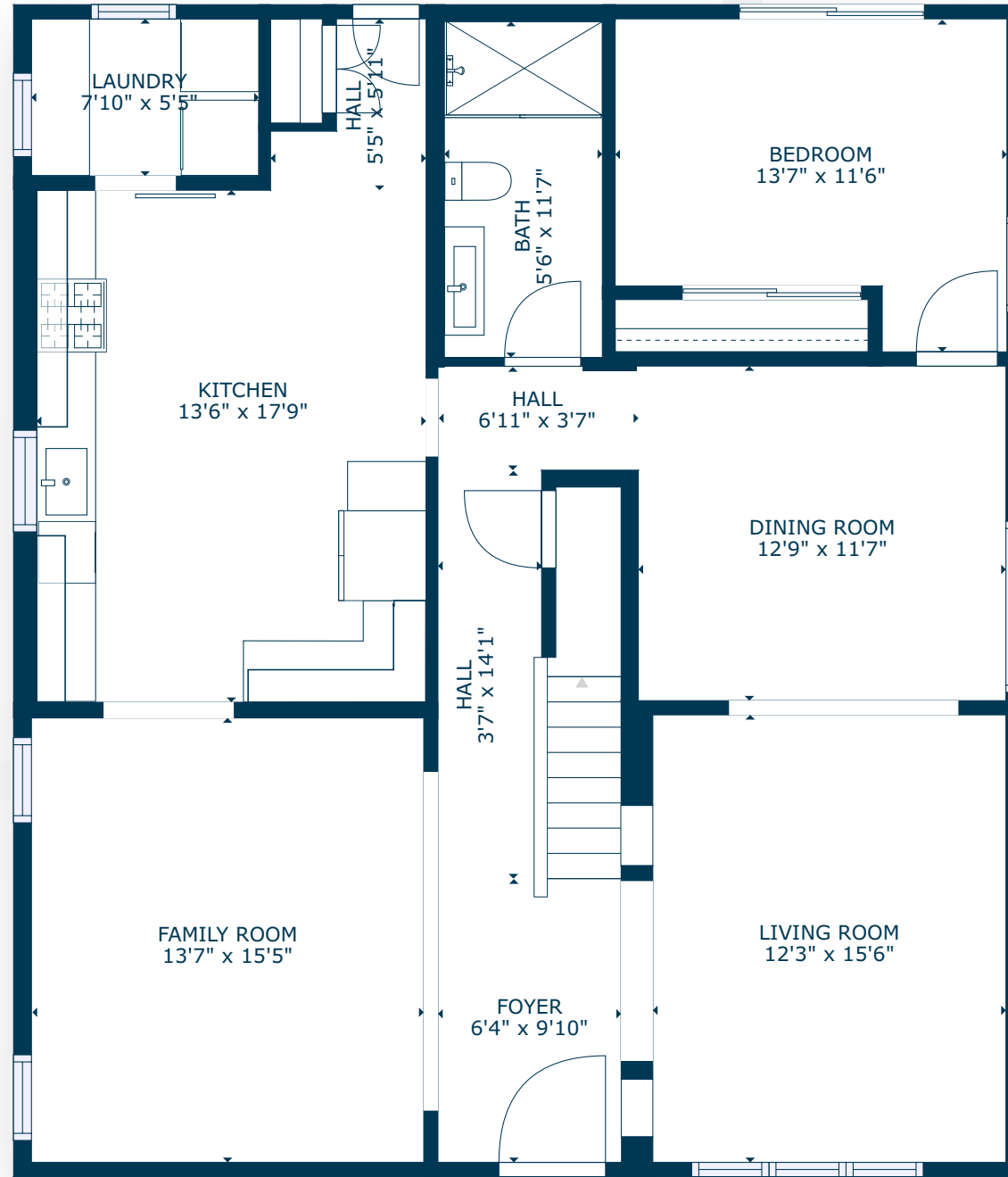
#518



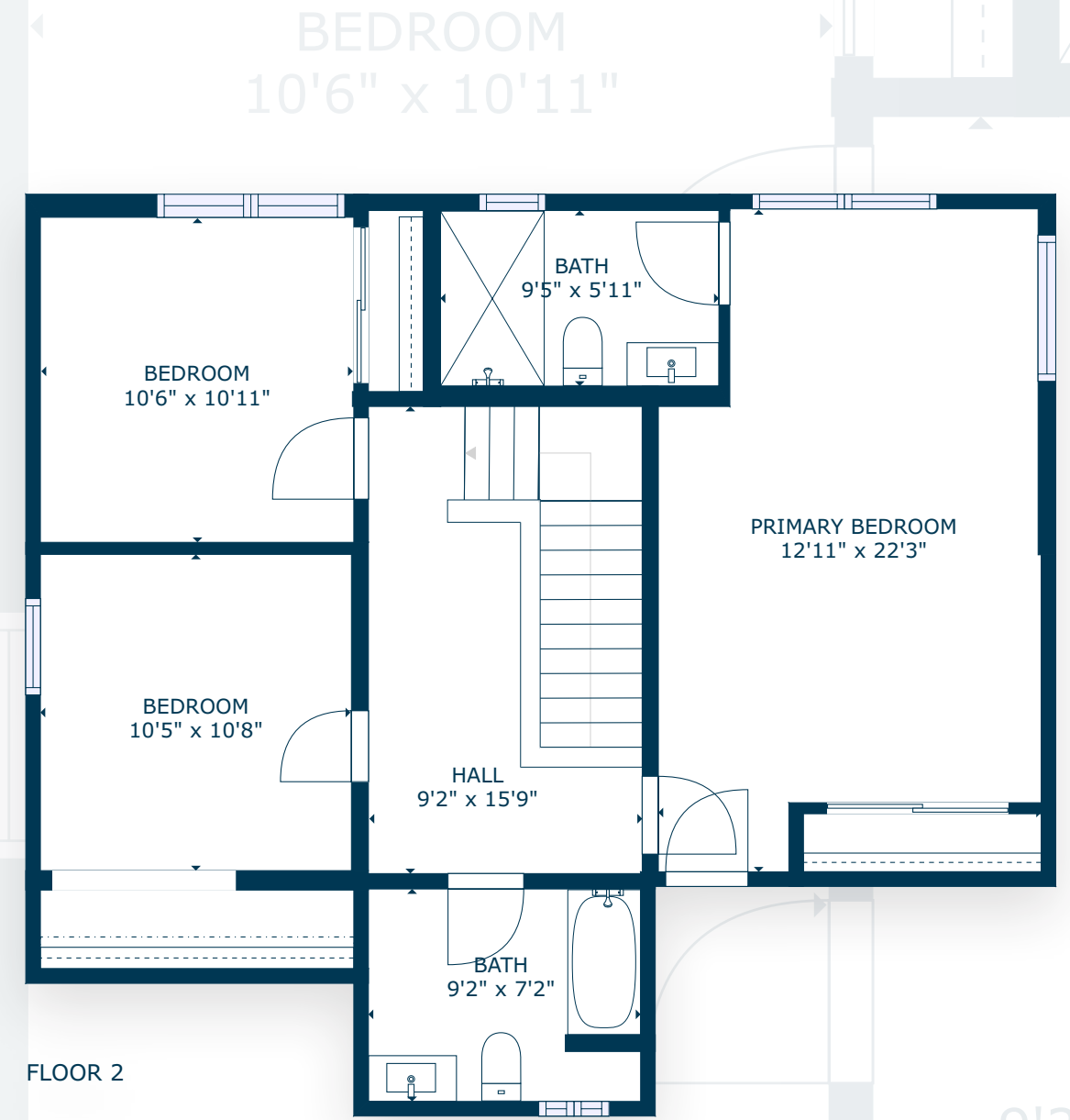
518
ROSEMONT AVE
LOS ANGELES, CA 90026

FLOOR PLAN

2,100 SQ.FT.
4 BED
3 BATH



FLOOR 1



FLOOR 2



SCAN, TAP or CLICK!

The information in this floorplan has been obtained from sources believed to be reliable. While we do not doubt its accuracy, we have not verified it and make no guarantee, warranty or representation about it. It is your responsibility to independently confirm its accuracy and completeness.

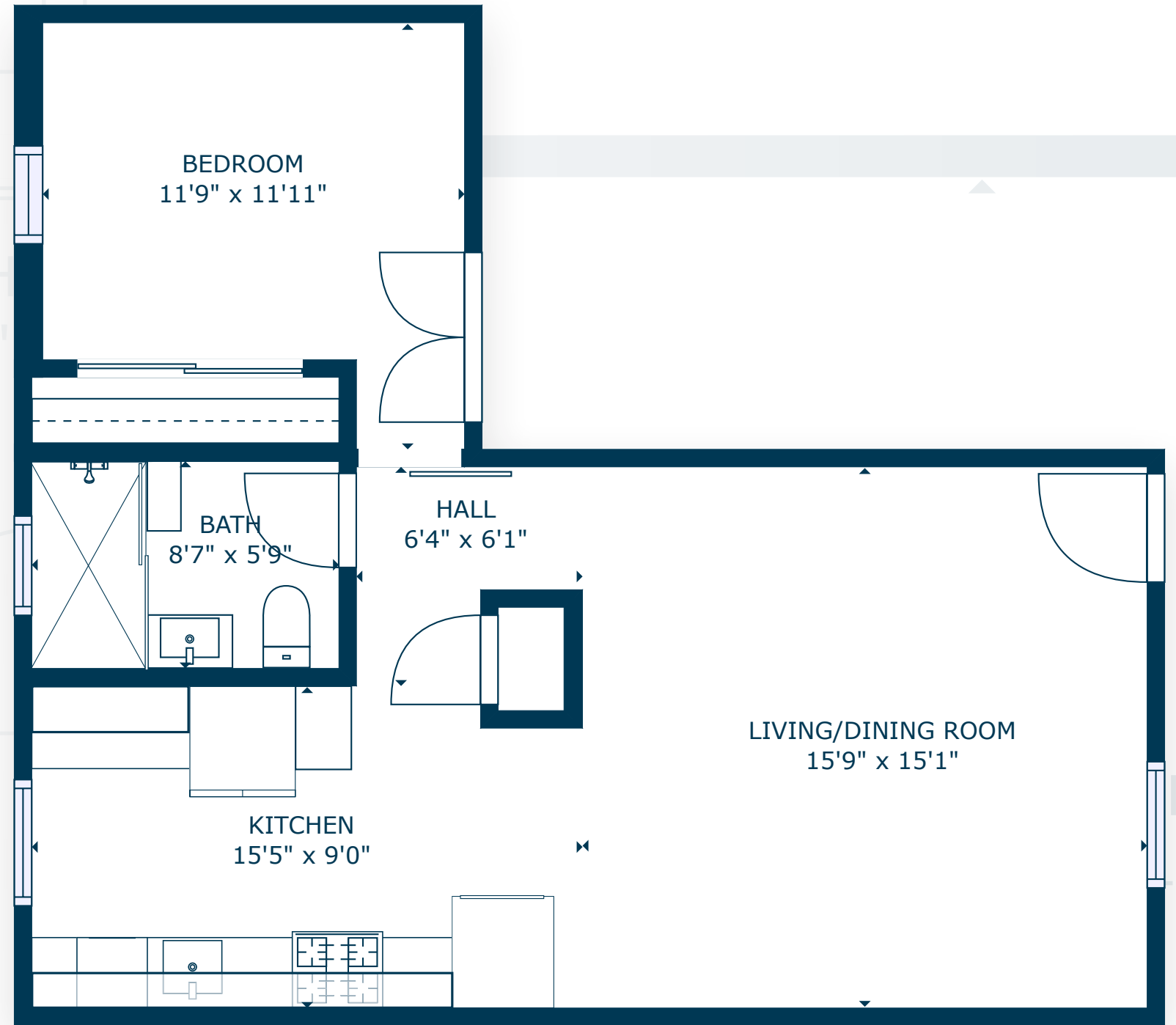
#516



516
ROSEMONT AVE
LOS ANGELES, CA 90026

FLOOR PLAN

600 SQ.FT.
1 BED
1 BATH



SCAN, TAP or CLICK!

The information in this floorplan has been obtained from sources believed to be reliable. While we do not doubt its accuracy, we have not verified it and make no guarantee, warranty or representation about it. It is your responsibility to independently confirm its accuracy and completeness.



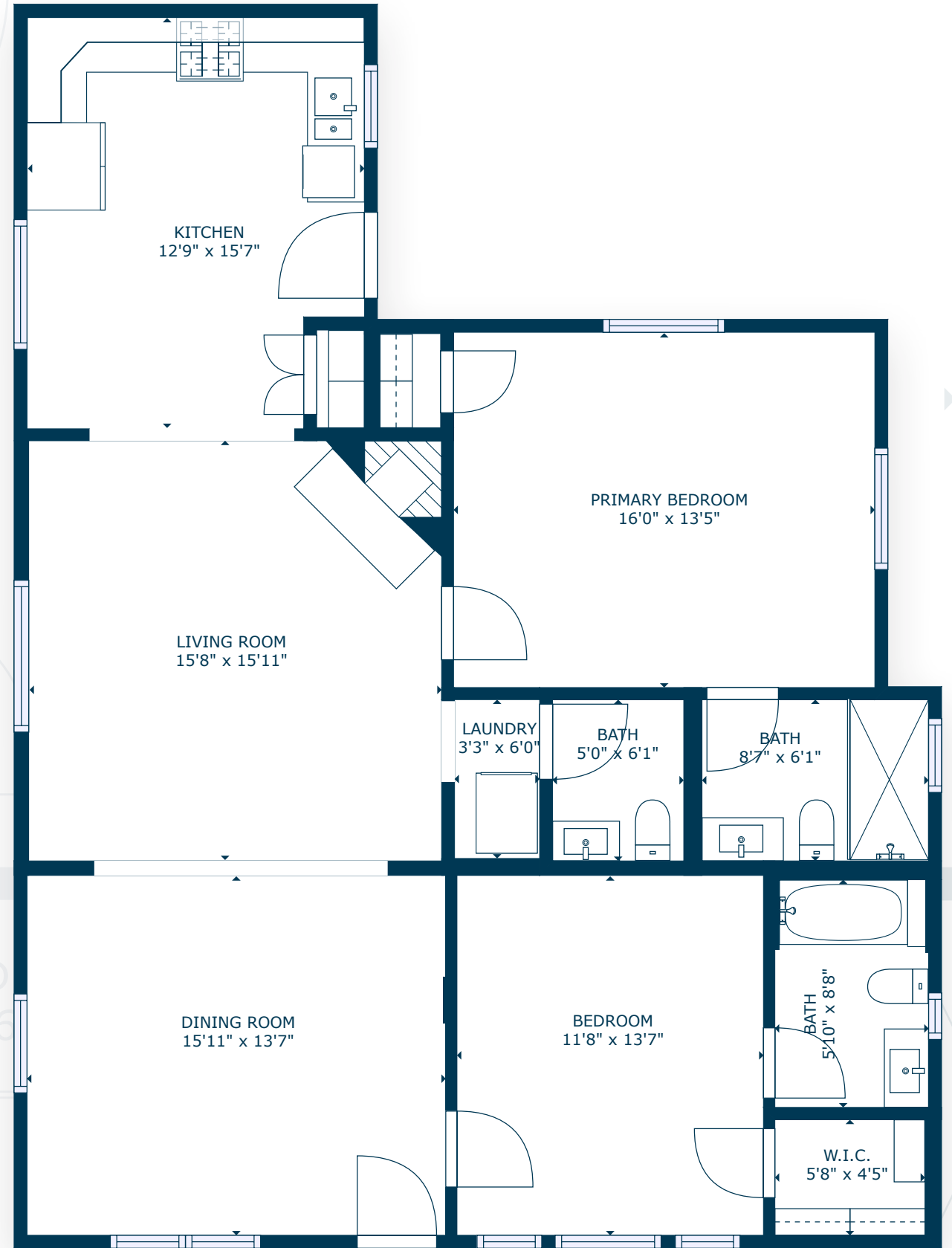
#514



514
ROSEMONT AVE
LOS ANGELES, CA 90026

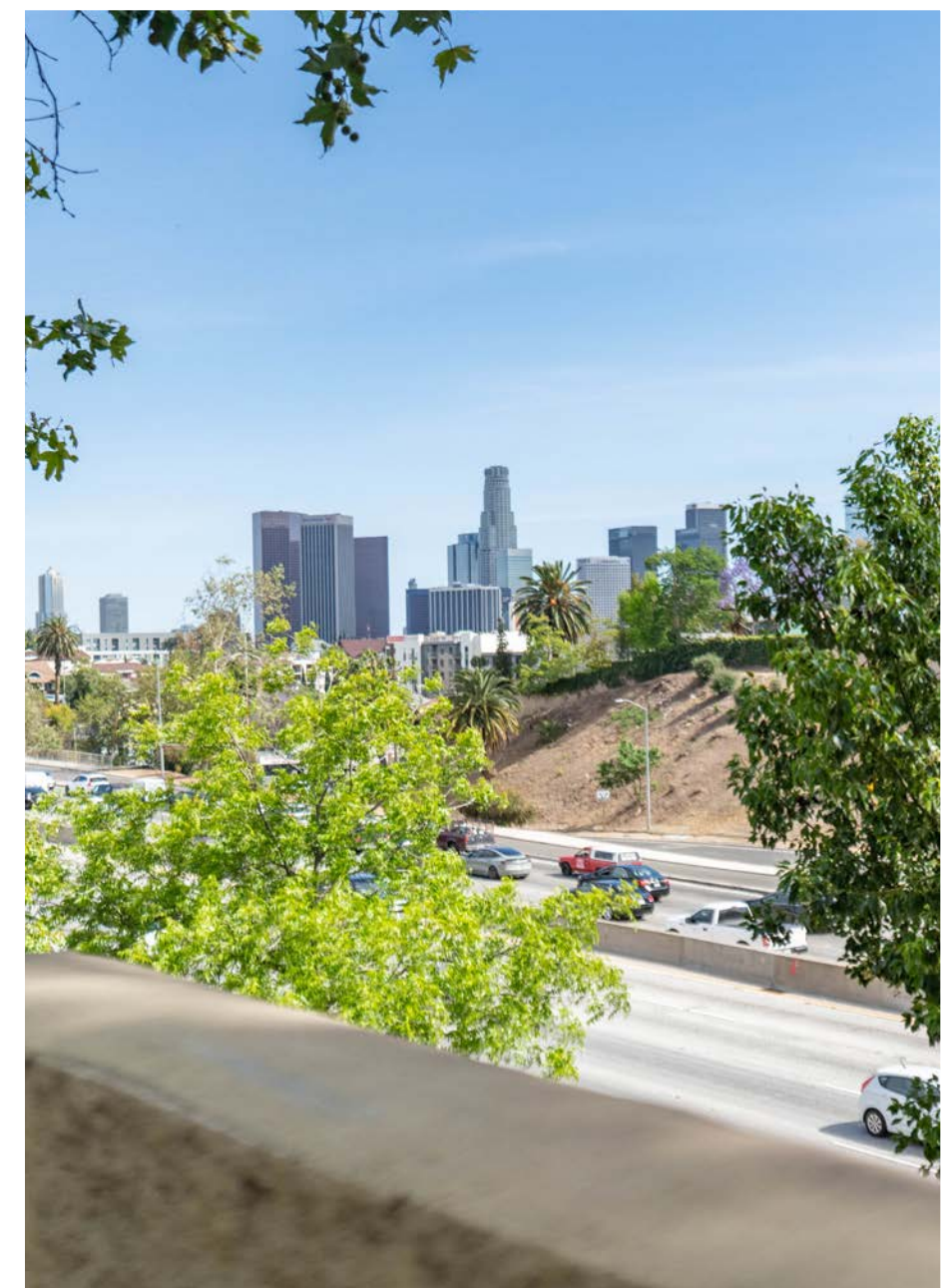
FLOOR PLAN

1,250 SQ.FT.
2 BED
2.5 BATH



SCAN, TAP or CLICK!

The information in this floorplan has been obtained from sources believed to be reliable. While we do not doubt its accuracy, we have not verified it and make no guarantee, warranty or representation about it. It is your responsibility to independently confirm its accuracy and completeness.

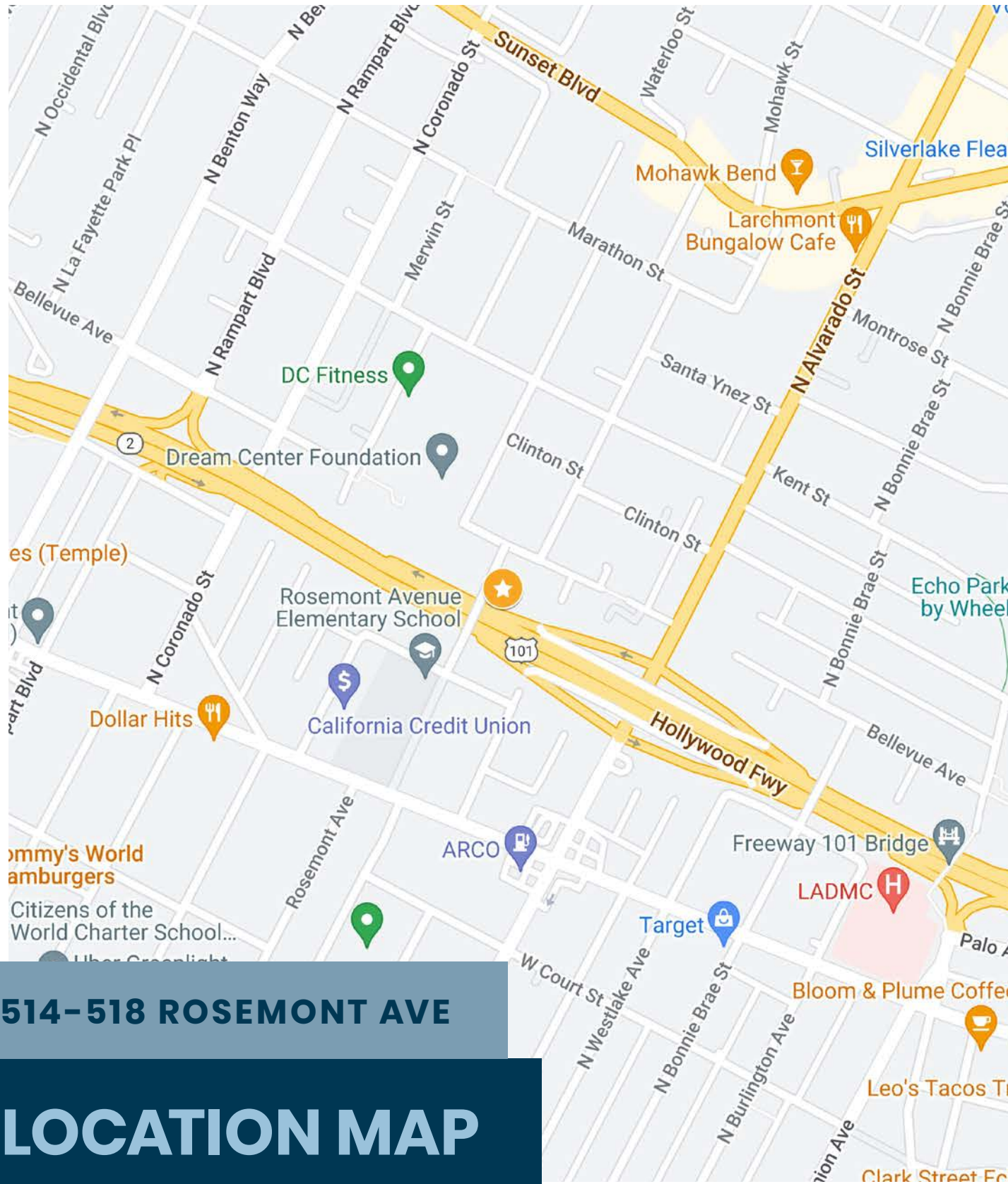




514-518 ROSEMONT AVE

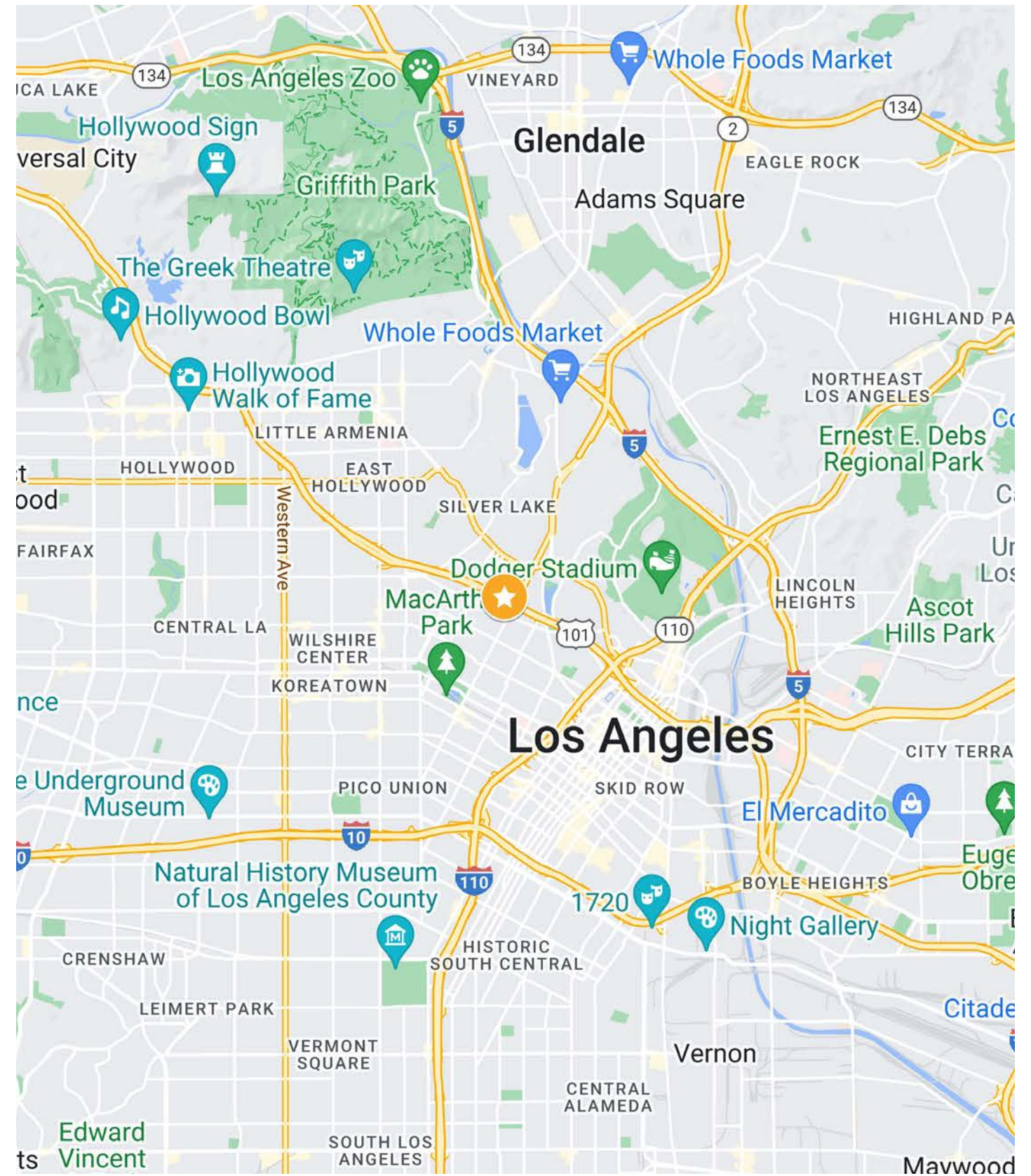
PARCEL MAP

MAP OF



514-518 ROSEMONT AVE

LOCATION MAP



514-518
ROSEMONT AVE
3,950 SQ.FT TRIPLEX ON 5,990 SQ.FT. LOT



661-702-9700 | 28005 SMYTH DR, VALENCIA, CA 91355 | STRATTONINTERNATIONAL.COM

PREPARED BY



Robert Stratton

CEO/President - DRE #01182000

Cell: 661-212-5699 | Office: 661-702-9700

Robert@StrattonInternational.com

DRE License No.
01182000

The information in this brochure has been obtained from sources believed to be reliable. While we do not doubt its accuracy, we have not verified it and make no guarantee, warranty or representation about it. It is your responsibility to independently confirm its accuracy and completeness.

All product names, logos, and brands are property of their respective owners. All company, product and service names used in this brochure are for identification purposes only. Use of these names, logos, and brands does not imply endorsement.