

RETAIL UNITS FOR LEASE

2313-2321

S ATLANTIC BLVD

COMMERCE, CA 90040



STRATTON
INTERNATIONAL

STRATTON
INTERNATIONAL

2313-2321

S ATLANTIC BLVD

COMMERCE, CA 90040

FOR LEASE

\$1.75 NNN



Robert Stratton

CEO/President - DRE #01182000

Cell: 661-212-5699 | Office: 661-702-9700

Robert@StrattonInternational.com



David Stratton

Sales Associate - DRE #02034297

Cell: 661-212-1308 | Office: 661-702-9700

David@StrattonInternational.com

The information in this brochure has been obtained from sources believed to be reliable. While we do not doubt its accuracy, we have not verified it and make no guarantee, warranty or representation about it. It is your responsibility to independently confirm its accuracy and completeness.

STRATTON INTERNATIONAL, INC.



RETAIL CENTER

7 UNITS

7,838 SQ.FT. BLDG

20,782 SQ.FT. LAND



OFFERING SUMMARY

2313-2321 S ATLANTIC BLVD COMMERCE, CA 90040

Stratton International is pleased to present 2313-2321 Atlantic Blvd, a multi-tenant 7,838 sq.ft. retail strip center with space for lease. Positioned on 20,782 sq.ft of CMC2 zoned land, the site covers four contiguous parcels stretching from Kinsie St to Jardine St. Offering outstanding street visibility, expansive signage, and excellent access. Situated conveniently close to the junction of the 5 Freeway and 710 Freeway, S Atlantic Blvd stands out as one of the main commercial veins in Commerce. For more details regarding this leasing opportunity, reach out to Robert Stratton or David Stratton.

UNITS	7
BUILDING SQ.FT	7,838±
LOT SIZE SQ.FT	20,782±
PARKING SPACES	32
FLOORS	1
YEAR BUILT	1926
APN(S)	5244-024-001, 002, 003, 004
ZONING	C/M1





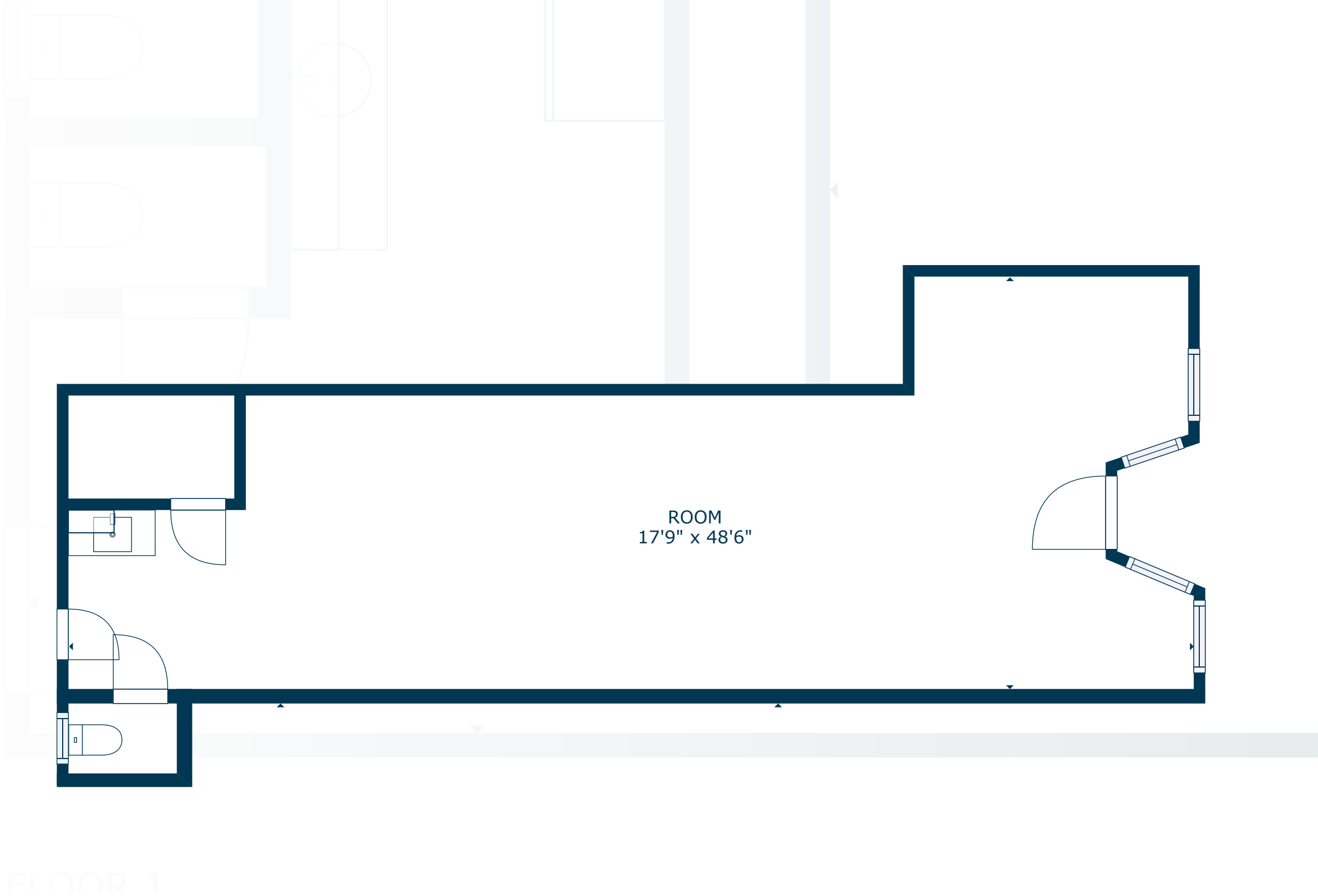




5119
KINSIE ST
COMMERCE, CA 90040

FLOOR PLAN

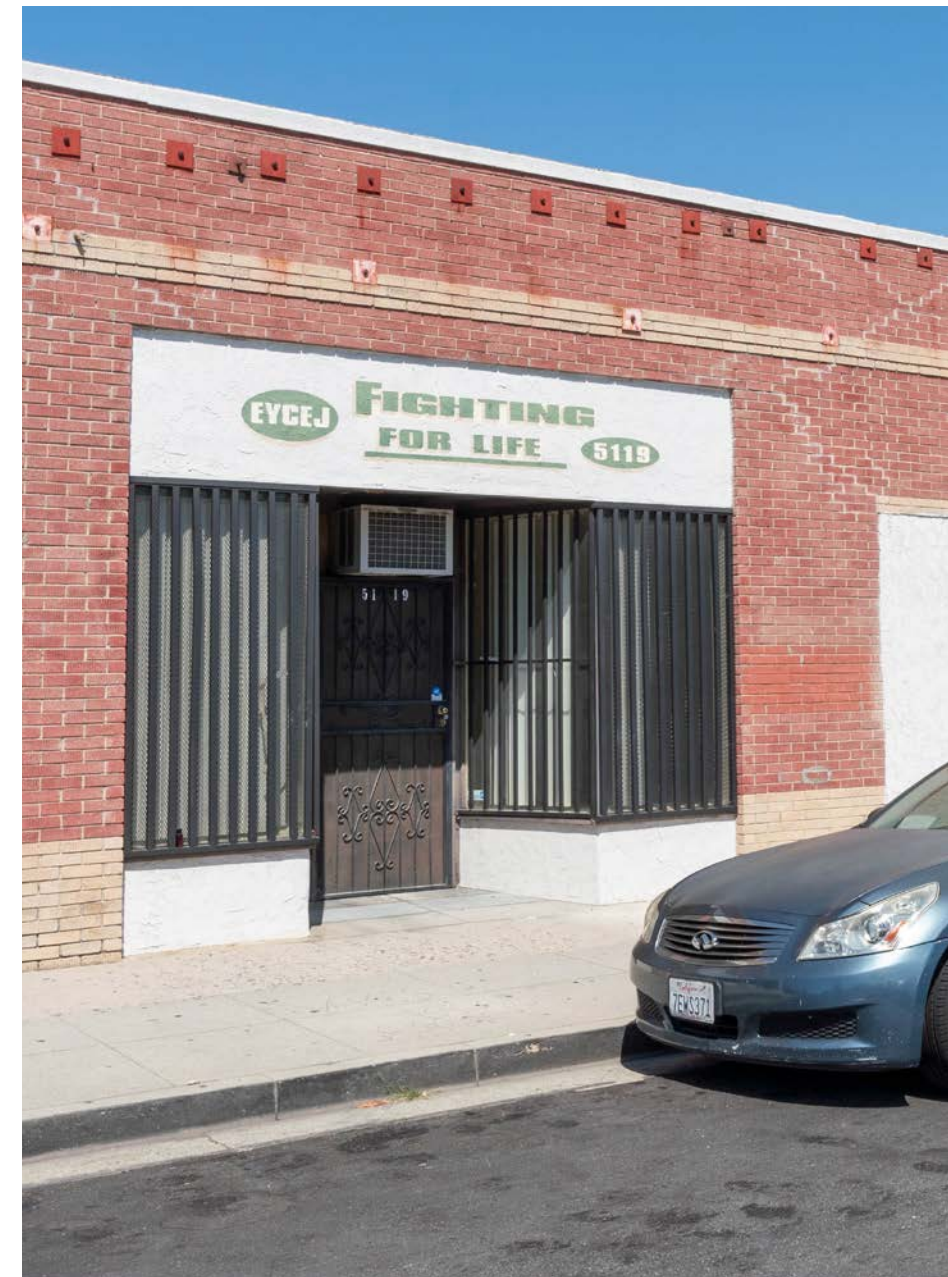
770 SQ.FT
UNIT SIZE



SCAN, TAP or CLICK!

The information in this floorplan has been obtained from sources believed to be reliable. While we do not doubt its accuracy, we have not verified it and make no guarantee, warranty or representation about it. It is your responsibility to independently confirm its accuracy and completeness.







5117

KINSIE ST
COMMERCE, CA 90040

FLOOR PLAN

770 SQ.FT
UNIT SIZE



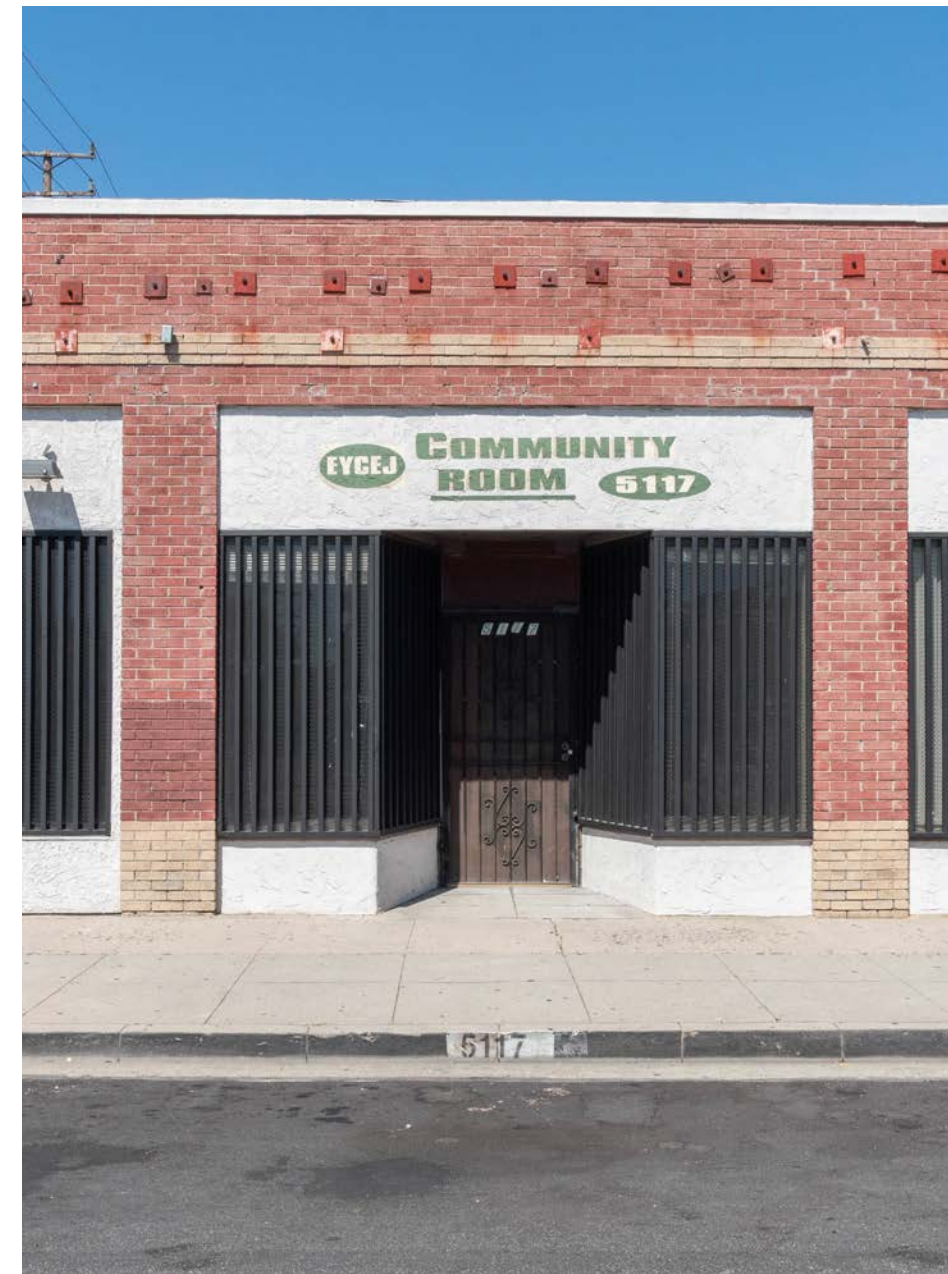
FLOOR 1



SCAN, TAP or CLICK!

The information in this floorplan has been obtained from sources believed to be reliable. While we do not doubt its accuracy, we have not verified it and make no guarantee, warranty or representation about it. It is your responsibility to independently confirm its accuracy and completeness.





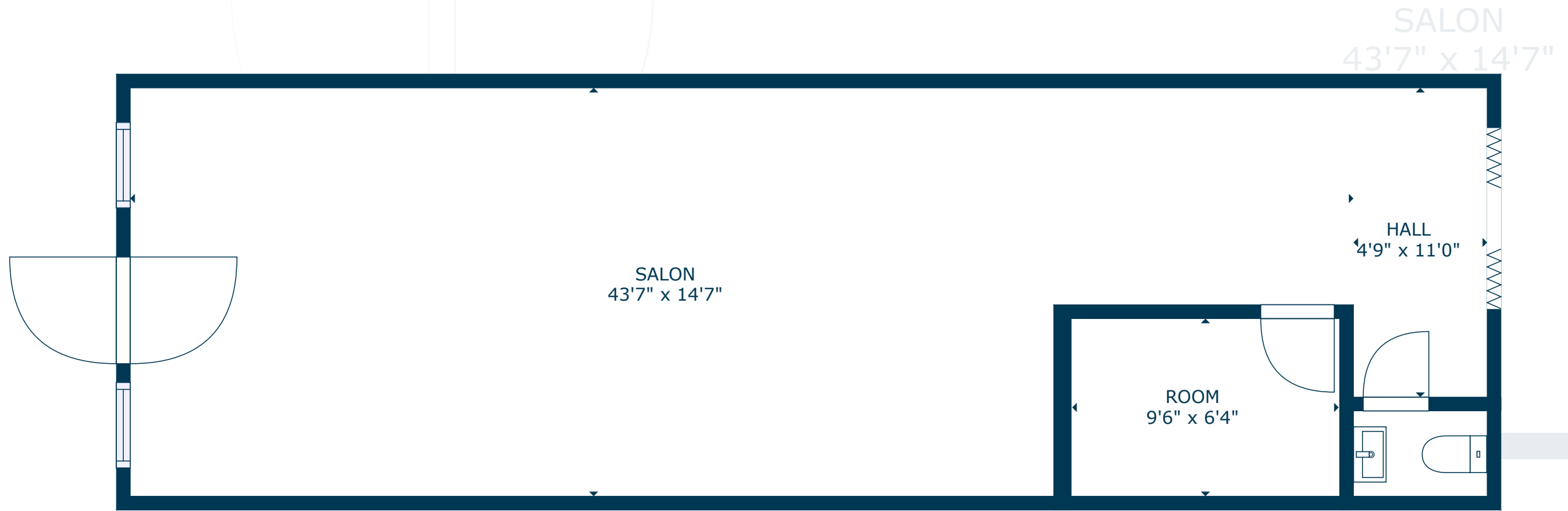


5115

KINSIE ST
COMMERCE, CA 90040

FLOOR PLAN

768 SQ.FT
UNIT SIZE



FLOOR 1



SCAN, TAP or CLICK!

The information in this floorplan has been obtained from sources believed to be reliable. While we do not doubt its accuracy, we have not verified it and make no guarantee, warranty or representation about it. It is your responsibility to independently confirm its accuracy and completeness.

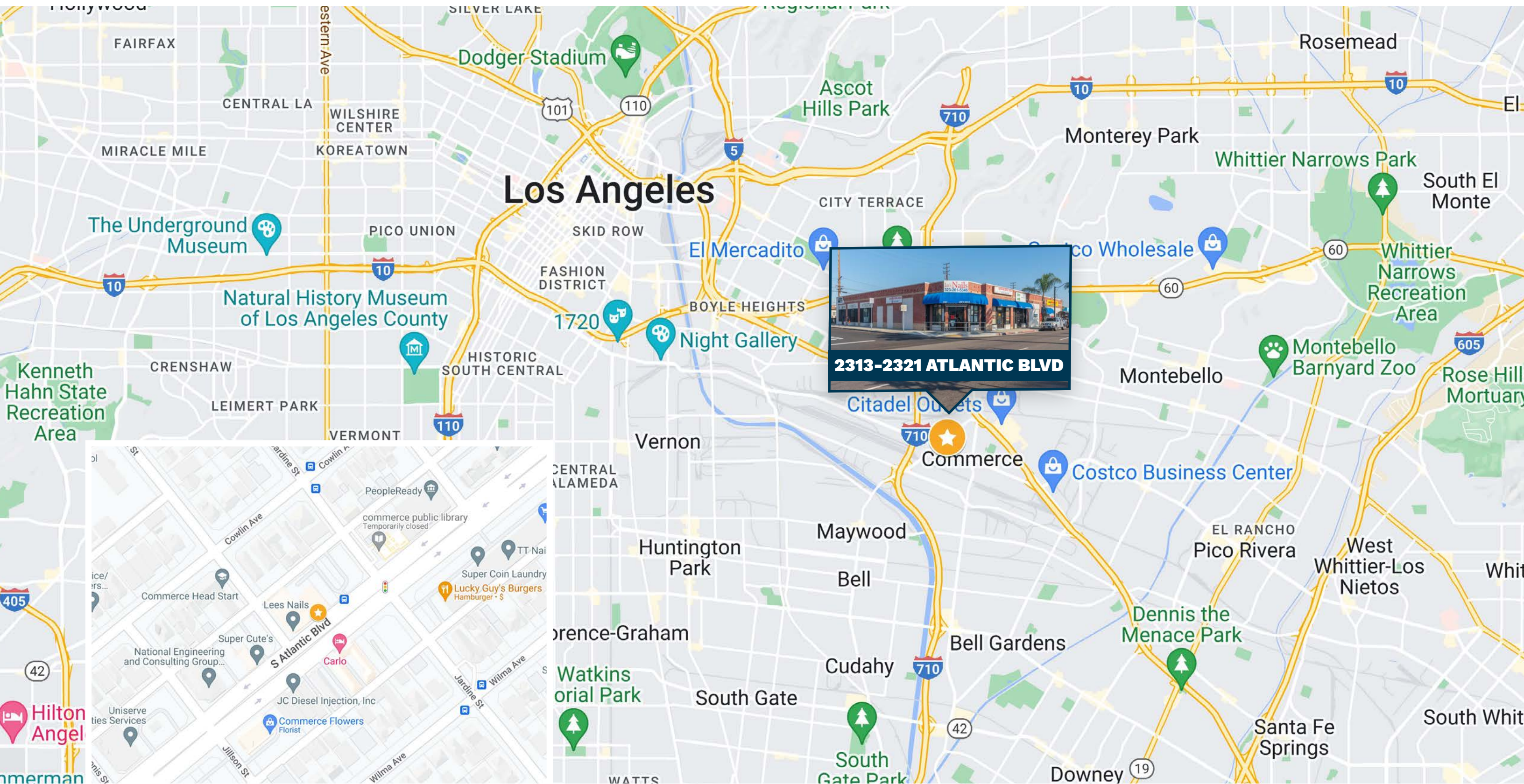




2313-2321 S ATLANTIC BLVD

PARCEL MAP







2313-2321 ATLANTIC BLVD COMMERCE, CA 90040

FOR LEASE

PREPARED BY

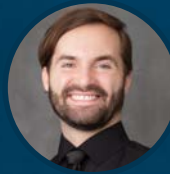


Robert Stratton

CEO/President - DRE #01182000

Cell: 661-212-5699 | Office: 661-702-9700

Robert@StrattonInternational.com



David Stratton

Associate - DRE #02034297

Cell: 661-212-1308 | Office: 661-702-9700

David@StrattonInternational.com

DRE License No.
01182000

The information in this brochure has been obtained from sources believed to be reliable. While we do not doubt its accuracy, we have not verified it and make no guarantee, warranty or representation about it. It is your responsibility to independently confirm its accuracy and completeness.

All product names, logos, and brands are property of their respective owners. All company, product and service names used in this brochure are for identification purposes only. Use of these names, logos, and brands does not imply endorsement.