

FOR SUBLEASE

8740 REMMET AVE

CANOGA PARK, CA 91304

INDUSTRIAL UNIT





8740 REMMET AVE

CANOGA PARK, CA 91304

**FOR SUBLEASE
INDUSTRIAL UNIT**



Robert Stratton

CEO/President - DRE #01182000

Cell: 661-212-5699

Robert@StrattonCRE.com

The information in this brochure has been obtained from sources believed to be reliable. While we do not doubt its accuracy, we have not verified it and make no guarantee, warranty or representation about it. It is your responsibility to independently confirm its accuracy and completeness.



UNIT - 3,583± SQ.FT.



OFFERING SUMMARY

8740 REMMET AVE

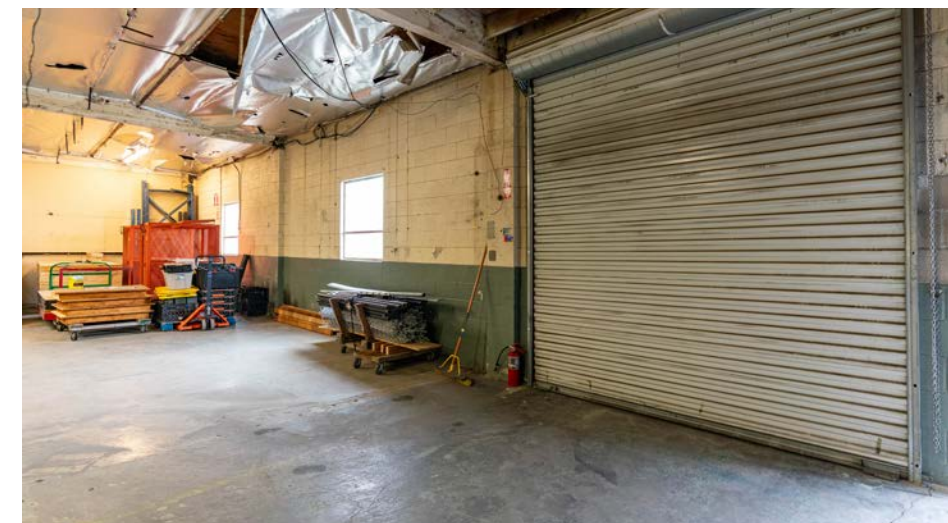
INDUSTRIAL UNIT FOR SUBLEASE

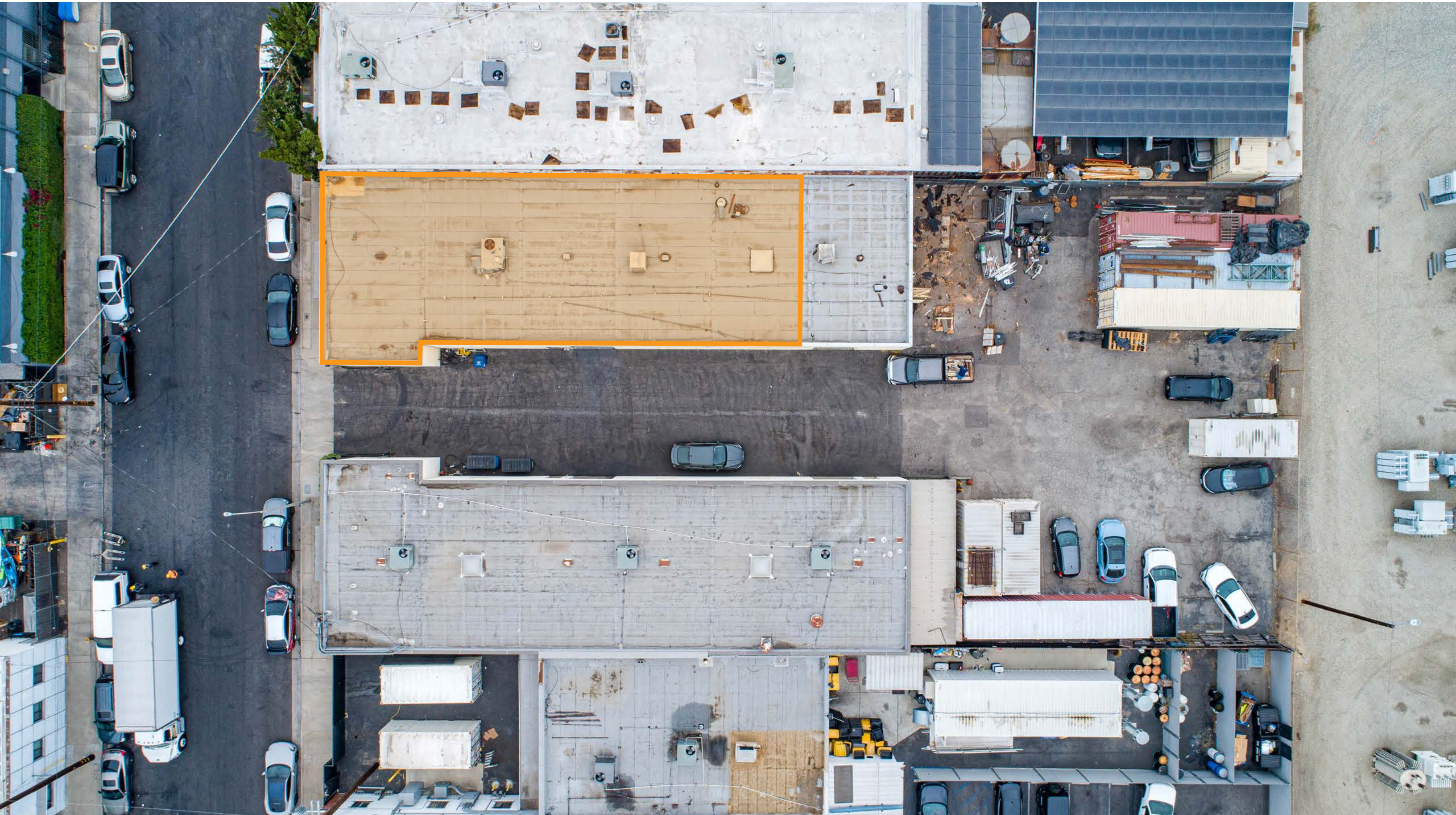
Stratton Commercial Real Estate, Inc. is delighted to offer 8740 Emmet Ave, a 3,583± sq.ft. industrial warehouse unit available for sublease in Canoga Park, CA. This practical and well-located property is ideal for businesses seeking a versatile industrial space with functional amenities. Featuring frontage along Emmet Ave, the property ensures excellent visibility and easy access for clients and deliveries. The fenced yard offers shared parking and outdoor storage with other tenants, providing ample space for vehicles while maintaining security. The warehouse is equipped with a 9.5' x 9.5' ground-level truck door, allowing for efficient loading and unloading. Inside, the unit includes private restrooms and minimal office space, creating a streamlined and functional setup for a variety of industrial uses. With convenient access to major routes like the 101 Freeway and Topanga Canyon Blvd, this location supports efficient transportation throughout the San Fernando Valley. 8740 Remmet Ave is perfectly suited for light manufacturing, warehousing, or distribution operations, making it an excellent choice for businesses seeking a strategic and adaptable industrial space. Contact Robert Stratton for more information.

UNIT SQ.FT	3,583±
FLOORS	1
GROUND LOADING	9.5' FT. X 9.5' FT
CLEAR HEIGHT	11' FT.
ZONING	MR2 (RESTRICTED LIGHT INDUSTRIAL)





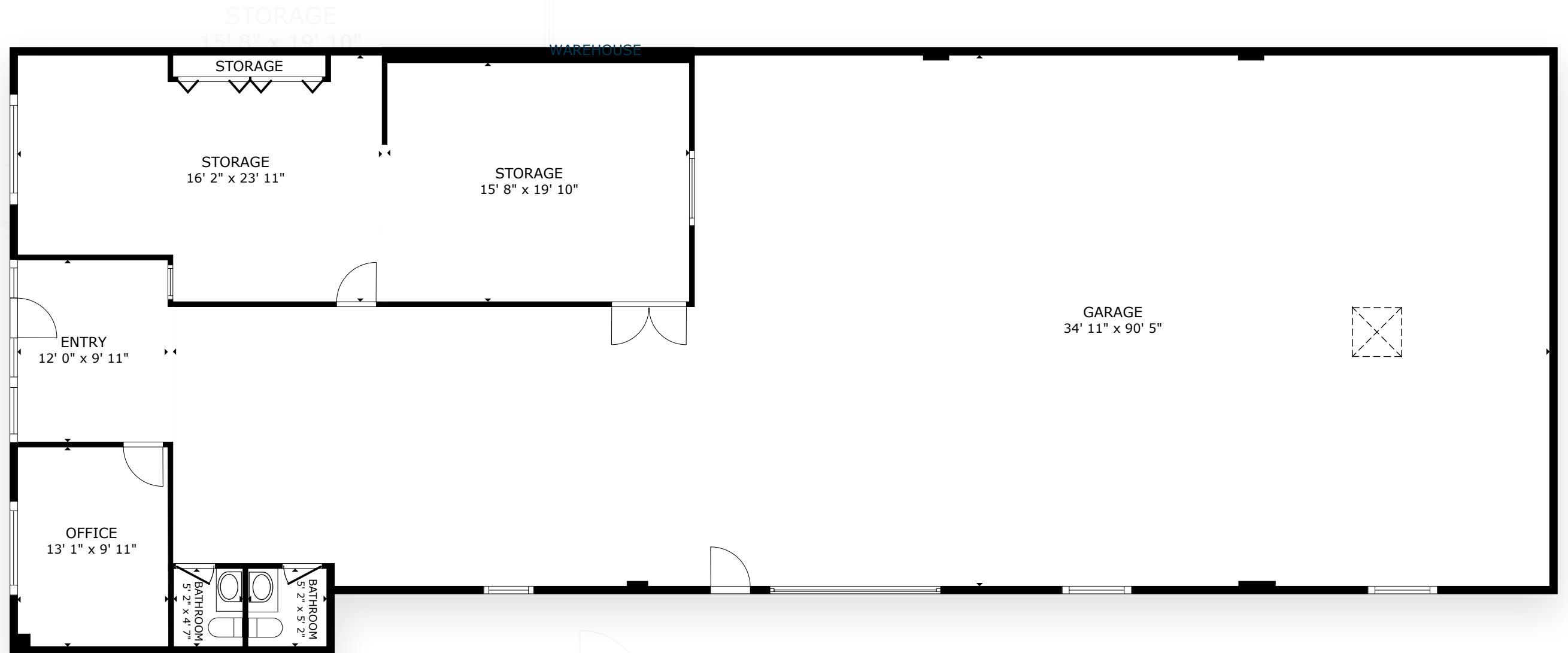




8740 REMMET AVE

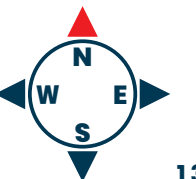
INDUSTRIAL UNIT

FLOOR PLAN



SCAN, TAP or CLICK!

The information in this floorplan has been obtained from sources believed to be reliable. While we do not doubt its accuracy, we have not verified it and make no guarantee, warranty or representation about it. It is your responsibility to independently confirm its accuracy and completeness.





8740 REMMET AVE

CANOGA PARK, CA 91302

INDUSTRIAL UNIT - FOR SUBLEASE

FOR MORE INFORMATION:



Robert Stratton

CEO/President - DRE #01182000

Cell: 661-212-5699

Robert@StrattonCRE.com

The information in this brochure has been obtained from sources believed to be reliable. While we do not doubt its accuracy, we have not verified it and make no guarantee, warranty or representation about it. It is your responsibility to independently confirm its accuracy and completeness.

